



"The Sinatra" Model 5781
"The Martin" Model 5782
"The Davis" Model 5783
"The Bishop" Model 5718



Lake Archway

This quaint community of single-family homes off Indian River Road in Virginia Beach is nestled around three courts situated next to a beautiful 5.5 acre lake. Near the border of Chesapeake and Virginia Beach, it is close to I-64, shopping and a large city park. Three plans each with multiple elevations are available and some have Master Suites downstairs.

How do I get there?

I-264/I-64 East, exit Indian River Road East. Follow past CBN & Centerville Turnpike light, turn left on General St. & Lake Archway will be on the left.
Model Address: 1144 Lady Victoria Way, Virginia Beach, VA 23464

To schedule an appointment, please call
888.376.5883

ainsliegroup.com
 **888.376.5883**

Marketed by
Crestline Realty Corporation

"The Sinatra" Model 5781 B

Lake Archway



Ainslie Homes



All information contained herein is based on the latest product information available at the time of printing. While Ainslie Group makes all reasonable efforts to provide accurate information, we also maintain the right to improve upon our designs at any time. As a result, there are no guarantees or warranties of prices, plans, specifications or materials represented in this brochure. Furthermore, we do not assume any liability for the accuracy or completeness of the illustrations and specifications presented. Illustrations are artists' interpretations only and are not meant to be an exact interpretation. This brochure shall not be relied upon as a substitute for current information available from your authorized AG representative.

"The Sinatra" Model 5781 D

Lake Archway



Ainslie Homes



All information contained herein is based on the latest product information available at the time of printing. While Ainslie Group makes all reasonable efforts to provide accurate information, we also maintain the right to improve upon our designs at any time. As a result, there are no guarantees or warranties of prices, plans, specifications or materials represented in this brochure. Furthermore, we do not assume any liability for the accuracy or completeness of the illustrations and specifications presented. Illustrations are artists' interpretations only and are not meant to be an exact interpretation. This brochure shall not be relied upon as a substitute for current information available from your authorized AG representative.

"The Sinatra" Model 5781 E

Lake Archway



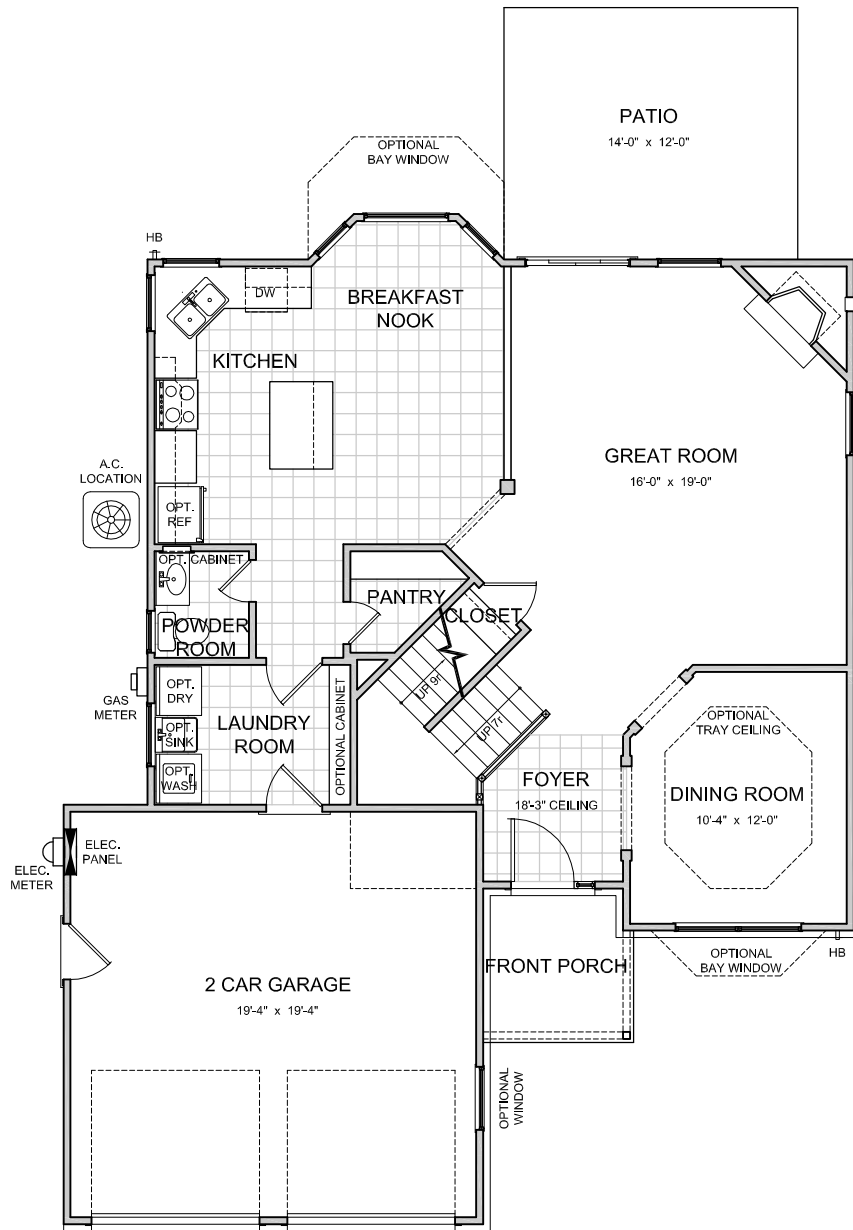
Ainslie Homes



All information contained herein is based on the latest product information available at the time of printing. While Ainslie Group makes all reasonable efforts to provide accurate information, we also maintain the right to improve upon our designs at any time. As a result, there are no guarantees or warranties of prices, plans, specifications or materials represented in this brochure. Furthermore, we do not assume any liability for the accuracy or completeness of the illustrations and specifications presented. Illustrations are artists' interpretations only and are not meant to be an exact interpretation. This brochure shall not be relied upon as a substitute for current information available from your authorized AG representative.

"The Sinatra" Model 5781


First Floor Plan Elevation 'D'



LAYOUT	
Bedrooms	4
Bathrooms	2.5

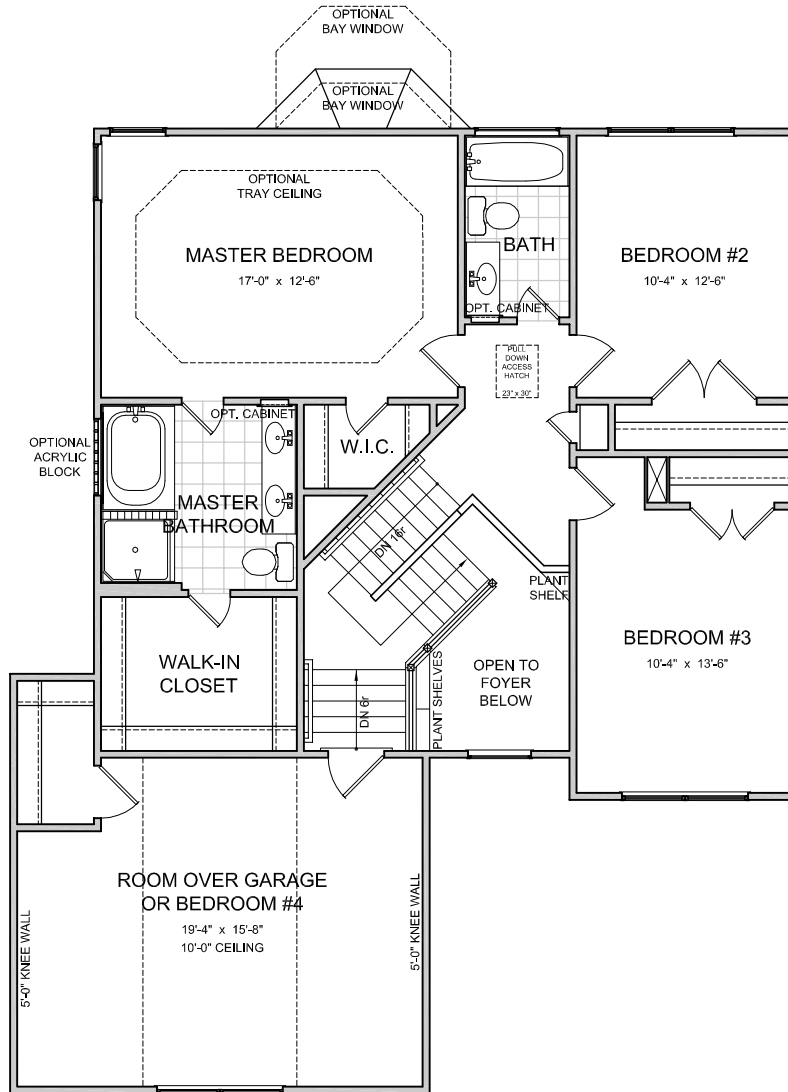
AREA	Sq.Ft.*
First Floor	990
Second Floor	973
Base Living Area	1963
2 Car Garage	393
1½ Car Garage	313
Room Over 2 Car Garage	336
Room Over 1½ Car Garage	220
Elevation 'B' Porch	30
Elevation 'D' Porch	49
Elevation 'E' Porch	102
5 Sided Bay Window	50
3 Sided Bay Window	16
Patio	167

*SQUARE FOOTAGE FOR THIS HOUSE IS CALCULATED USING ANSI Z765-2003 STANDARDS. ACTUAL SQUARE FOOTAGE MAY VARY DUE TO FIELD CONDITIONS OR CUSTOMIZED FEATURES.

NOT TO SCALE 
REVISION DATE: 10/10/08 jb

"The Sinatra" Model 5781

Second Floor Plan Elevation 'D'



LAYOUT	
Bedrooms	4
Bathrooms	2.5

AREA	Sq.Ft.*
First Floor	990
Second Floor	973
Base Living Area	1963
2 Car Garage	393
1½ Car Garage	313
Room Over 2 Car Garage	336
Room Over 1½ Car Garage	220
Elevation 'B' Porch	30
Elevation 'D' Porch	49
Elevation 'E' Porch	102
5 Sided Bay Window	50
3 Sided Bay Window	16
Patio	167

*SQUARE FOOTAGE FOR THIS HOUSE IS CALCULATED USING ANSI Z765-2003 STANDARDS. ACTUAL SQUARE FOOTAGE MAY VARY DUE TO FIELD CONDITIONS OR CUSTOMIZED FEATURES.

NOT TO SCALE 
REVISION DATE: 10/10/08 jb

"The Martin" Model 5782 B

Lake Archway



Ainslie Homes



All information contained herein is based on the latest product information available at the time of printing. While Ainslie Group makes all reasonable efforts to provide accurate information, we also maintain the right to improve upon our designs at any time. As a result, there are no guarantees or warranties of prices, plans, specifications or materials represented in this brochure. Furthermore, we do not assume any liability for the accuracy or completeness of the illustrations and specifications presented. Illustrations are artists' interpretations only and are not meant to be an exact interpretation. This brochure shall not be relied upon as a substitute for current information available from your authorized AG representative.

"The Martin" Model 5782 D

Lake Archway



Ainslie Homes



All information contained herein is based on the latest product information available at the time of printing. While Ainslie Group makes all reasonable efforts to provide accurate information, we also maintain the right to improve upon our designs at any time. As a result, there are no guarantees or warranties of prices, plans, specifications or materials represented in this brochure. Furthermore, we do not assume any liability for the accuracy or completeness of the illustrations and specifications presented. Illustrations are artists' interpretations only and are not meant to be an exact interpretation. This brochure shall not be relied upon as a substitute for current information available from your authorized AG representative.

"The Martin" Model 5782 E

Lake Archway



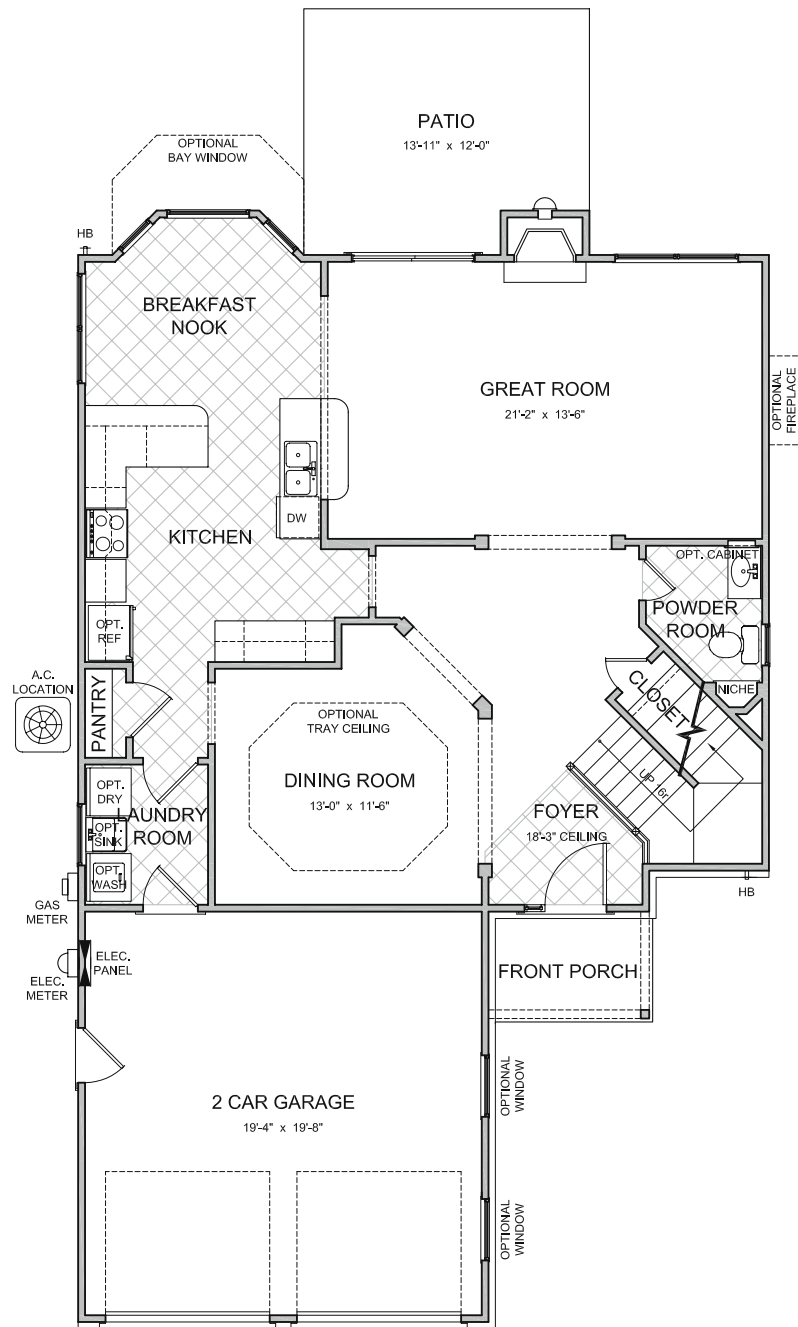
Ainslie Homes



All information contained herein is based on the latest product information available at the time of printing. While Ainslie Group makes all reasonable efforts to provide accurate information, we also maintain the right to improve upon our designs at any time. As a result, there are no guarantees or warranties of prices, plans, specifications or materials represented in this brochure. Furthermore, we do not assume any liability for the accuracy or completeness of the illustrations and specifications presented. Illustrations are artists' interpretations only and are not meant to be an exact interpretation. This brochure shall not be relied upon as a substitute for current information available from your authorized AG representative.

"The Martin" Model 5782

First Floor Plan Elevation 'D'



LAYOUT	
Bedrooms	4
Bathrooms	2.5

AREA	Sq.Ft.*
First Floor	1081
Second Floor	1024
Base Living Area	2105
2 Car Garage	400
1½ Car Garage	330
Room Over 2 Car Garage	400
Room Over 1½ Car Garage	340
Elevation 'B' Porch	39
Elevation 'D' Porch	39
Elevation 'E' Porch	79
5 Sided Bay Window	50
3 Sided Bay Window	16
Patio	158

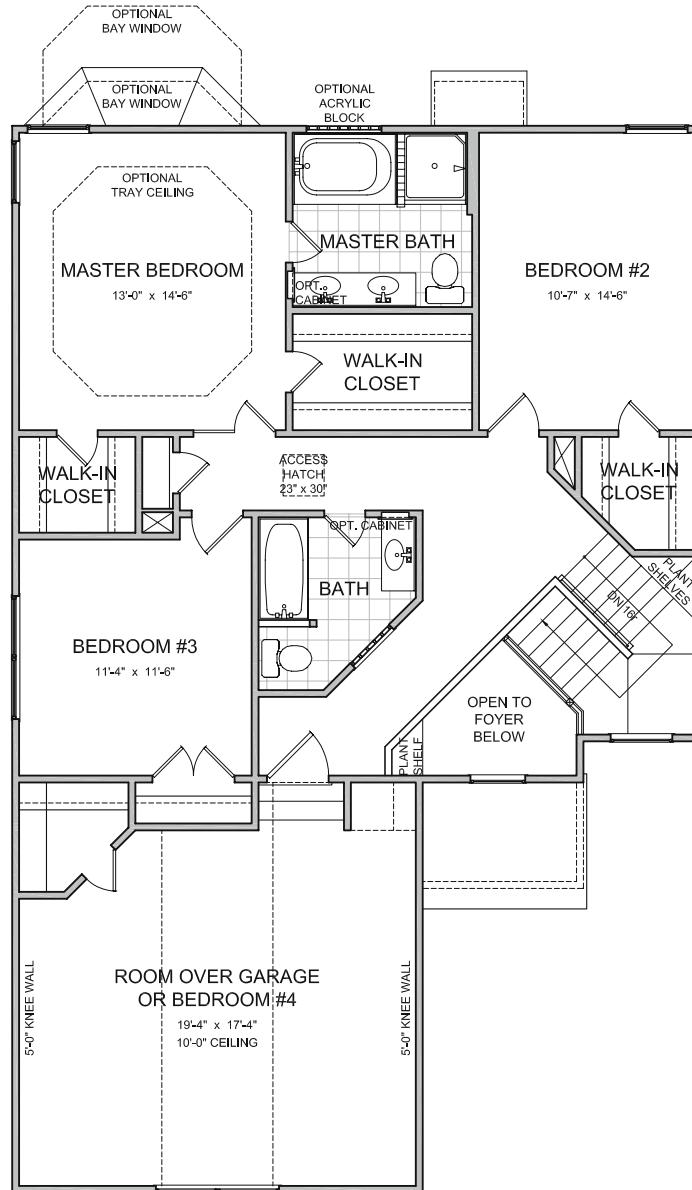
*SQUARE FOOTAGE FOR THIS HOUSE IS CALCULATED USING ANSI Z765-2003 STANDARDS. ACTUAL SQUARE FOOTAGE MAY VARY DUE TO FIELD CONDITIONS OR CUSTOMIZED FEATURES

NOT TO SCALE 
 REVISION DATE: 10/10/08 jb

All information contained herein is based on the latest product information available at the time of printing. While Ainslie Group makes all reasonable efforts to provide accurate information, we also maintain the right to improve upon our designs at any time. As a result, there are no guarantees or warranties of prices, plans, specifications or materials represented in this brochure. Furthermore, we do not assume any liability for the accuracy or completeness of the illustrations and specifications presented. Illustrations are artists' interpretations only and are not meant to be an exact interpretation. This brochure shall not be relied upon as a substitute for current information available from your authorized AG representative.

"The Martin" Model 5782

Second Floor Plan Elevation 'D'



LAYOUT	
Bedrooms	4
Bathrooms	2.5

AREA	Sq.Ft.*
First Floor	1081
Second Floor	1024
Base Living Area	2105
2 Car Garage	400
1½ Car Garage	330
Room Over 2 Car Garage	400
Room Over 1½ Car Garage	340
Elevation 'B' Porch	39
Elevation 'D' Porch	39
Elevation 'E' Porch	79
5 Sided Bay Window	50
3 Sided Bay Window	16
Patio	158

*SQUARE FOOTAGE FOR THIS HOUSE IS CALCULATED USING ANSI Z765-2003 STANDARDS. ACTUAL SQUARE FOOTAGE MAY VARY DUE TO FIELD CONDITIONS OR CUSTOMIZED FEATURES.

NOT TO SCALE 

REVISION DATE: 10/10/08 jb

"The Davis" Model 5783 B

Lake Archway



Ainslie Homes



All information contained herein is based on the latest product information available at the time of printing. While Ainslie Group makes all reasonable efforts to provide accurate information, we also maintain the right to improve upon our designs at any time. As a result, there are no guarantees or warranties of prices, plans, specifications or materials represented in this brochure. Furthermore, we do not assume any liability for the accuracy or completeness of the illustrations and specifications presented. Illustrations are artists' interpretations only and are not meant to be an exact interpretation. This brochure shall not be relied upon as a substitute for current information available from your authorized AG representative.

"The Davis" Model 5783 D

Lake Archway



Ainslie Homes



All information contained herein is based on the latest product information available at the time of printing. While Ainslie Group makes all reasonable efforts to provide accurate information, we also maintain the right to improve upon our designs at any time. As a result, there are no guarantees or warranties of prices, plans, specifications or materials represented in this brochure. Furthermore, we do not assume any liability for the accuracy or completeness of the illustrations and specifications presented. Illustrations are artists' interpretations only and are not meant to be an exact interpretation. This brochure shall not be relied upon as a substitute for current information available from your authorized AG representative.

"The Davis" Model 5783 E

Lake Archway



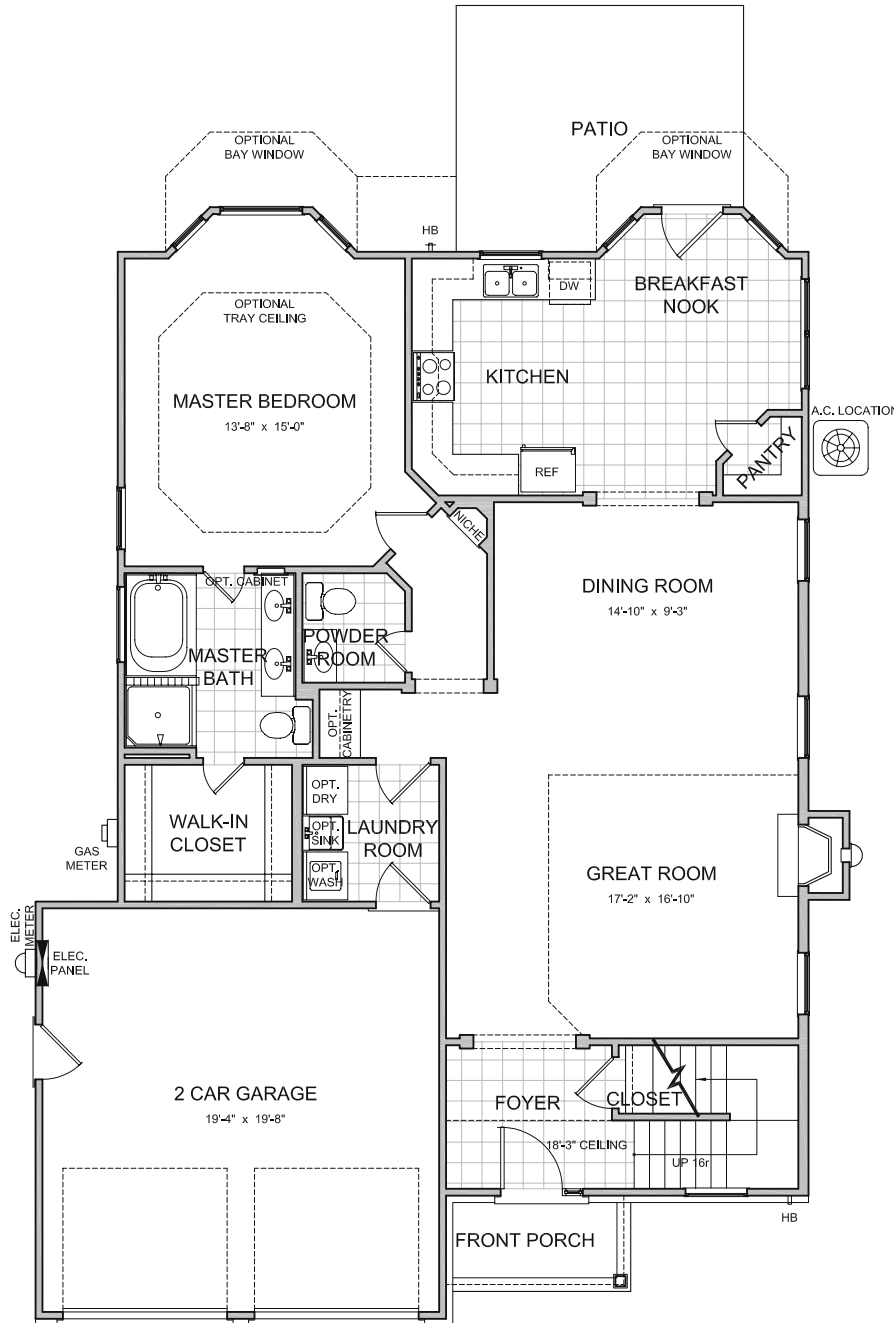
Ainslie Homes



All information contained herein is based on the latest product information available at the time of printing. While Ainslie Group makes all reasonable efforts to provide accurate information, we also maintain the right to improve upon our designs at any time. As a result, there are no guarantees or warranties of prices, plans, specifications or materials represented in this brochure. Furthermore, we do not assume any liability for the accuracy or completeness of the illustrations and specifications presented. Illustrations are artists' interpretations only and are not meant to be an exact interpretation. This brochure shall not be relied upon as a substitute for current information available from your authorized AG representative.

"The Davis" Model 5783

First Floor Plan Elevation 'D'



LAYOUT	
Bedrooms	4
With Optional	5
Bathrooms	2.5
With Optional	3.5

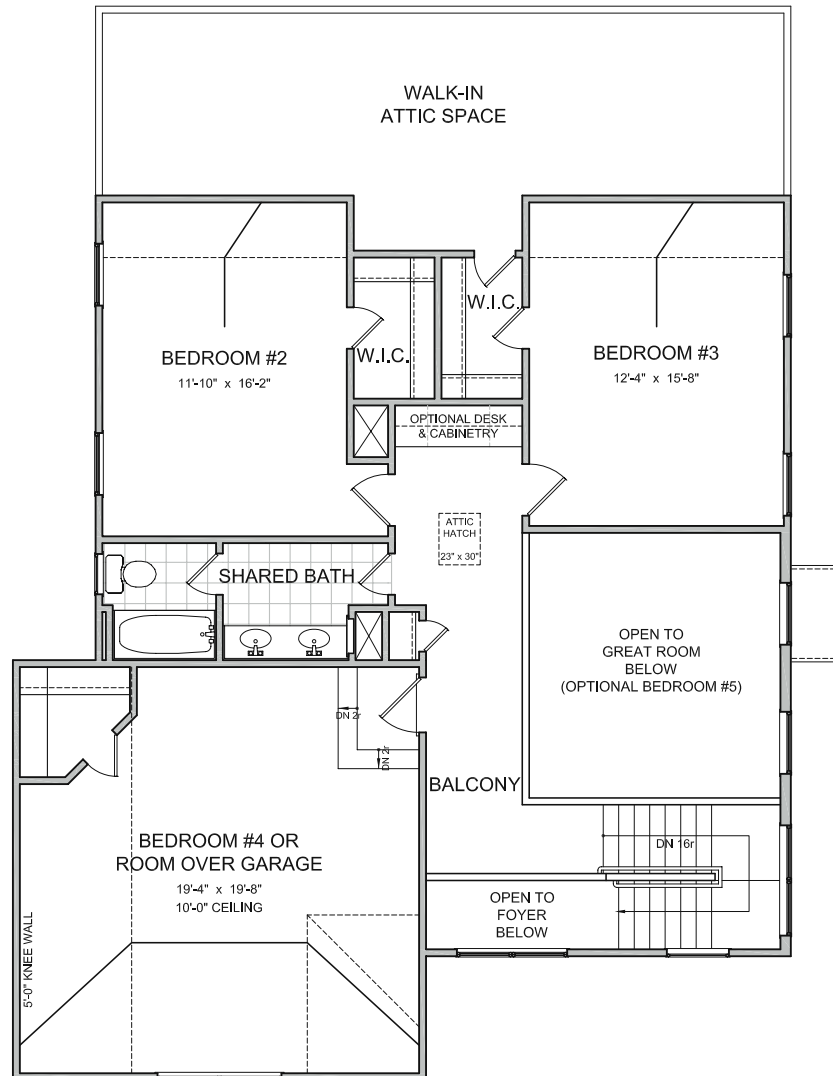
AREA	Sq.Ft.*
First Floor	1369
Second Floor	802
Base Living Area	2171
2 Car Garage	397
1½ Car Garage	316
Room Over 2 Car Garage	398
Room Over 1½ Car Garage	316
2nd Floor With Master	916
2nd Floor With Bedroom #5	964
Elevation 'B' Porch	45
Elevation 'D' Porch	42
Elevation 'E' Porch	84
5 Sided Bay Window	50
3 Sided Bay Window	16
Patio	155

*SQUARE FOOTAGE FOR THIS HOUSE IS CALCULATED USING ANSI Z765-2003 STANDARDS. ACTUAL SQUARE FOOTAGE MAY VARY DUE TO FIELD CONDITIONS OR CUSTOMIZED FEATURES.

NOT TO SCALE
REVISION DATE: 10/10/08 jb

"The Davis" Model 5783

Second Floor Plan
Elevation 'D'



LAYOUT	
Bedrooms	4
With Optional	5
Bathrooms	2.5
With Optional	3.5

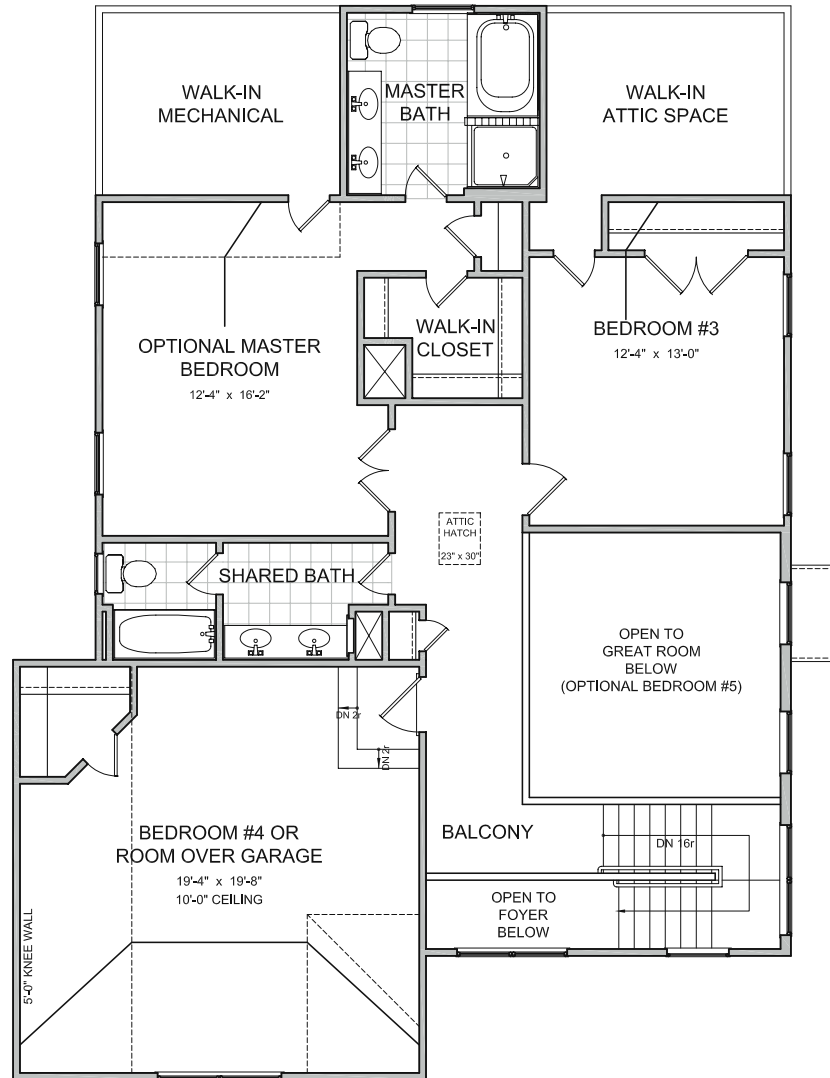
AREA	Sq.Ft.*
First Floor	1369
Second Floor	802
Base Living Area	2171
2 Car Garage	397
1½ Car Garage	316
Room Over 2 Car Garage	398
Room Over 1½ Car Garage	316
2nd Floor With Master	916
2nd Floor With Bedroom #5	964
Elevation 'B' Porch	45
Elevation 'D' Porch	42
Elevation 'E' Porch	84
5 Sided Bay Window	50
3 Sided Bay Window	16
Patio	155

*SQUARE FOOTAGE FOR THIS HOUSE IS CALCULATED USING ANSI Z765-2003 STANDARDS. ACTUAL SQUARE FOOTAGE MAY VARY DUE TO FIELD CONDITIONS OR CUSTOMIZED FEATURES.

NOT TO SCALE 
REVISION DATE: 10/10/08 jb

"The Davis" Model 5783

Second Floor Plan With Optional 2nd Master Bedroom Elevation 'D'



LAYOUT	
Bedrooms	4
With Optional	5
Bathrooms	2.5
With Optional	3.5

AREA	Sq.Ft.*
First Floor	1369
Second Floor	802
Base Living Area	2171
2 Car Garage	397
1½ Car Garage	316
Room Over 2 Car Garage	398
Room Over 1½ Car Garage	316
2nd Floor With Master	916
2nd Floor With Bedroom #5	964
Elevation 'B' Porch	45
Elevation 'D' Porch	42
Elevation 'E' Porch	84
5 Sided Bay Window	50
3 Sided Bay Window	16
Patio	155

*SQUARE FOOTAGE FOR THIS HOUSE IS CALCULATED USING ANSI Z765-2003 STANDARDS. ACTUAL SQUARE FOOTAGE MAY VARY DUE TO FIELD CONDITIONS OR CUSTOMIZED FEATURES.

NOT TO SCALE
REVISION DATE: 10/10/08 jlb

“The Bishop” Model 5718 “D”

WENDELL HOMES



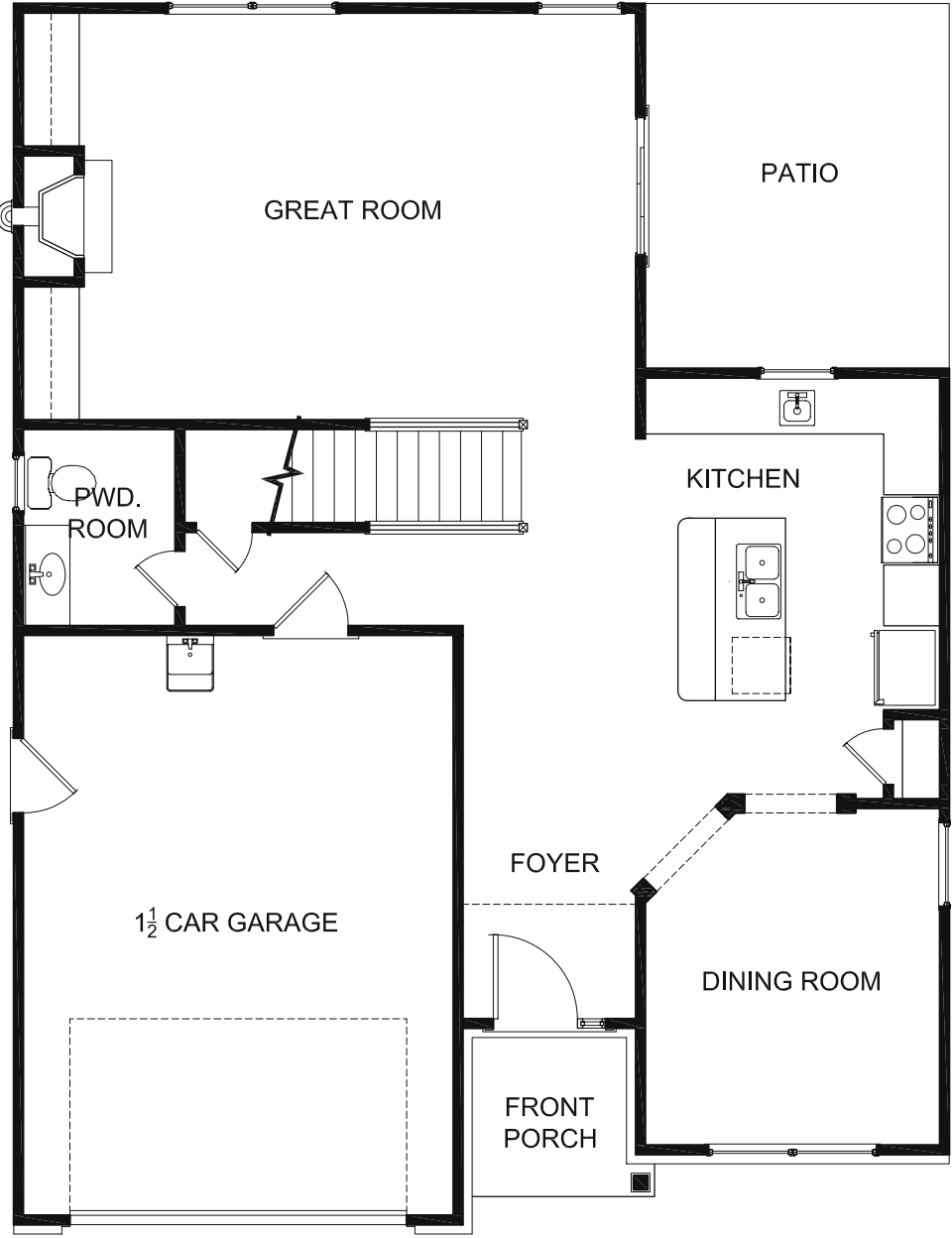
All information contained herein is based on the latest product information available at the time of printing. While Ainslie Group makes all reasonable efforts to provide accurate information, we also maintain the right to improve upon our designs at any time. As a result, there are no guarantees or warranties of prices, plans, specifications or materials represented in this brochure. Furthermore, we do not assume any liability for the accuracy or completeness of the illustrations and specifications presented. Illustrations are artists' interpretations only and are not meant to be an exact interpretation. This brochure shall not be relied upon as a substitute for current information available from your authorized AG representative.

“The Bishop” Model 5718 “D” with Bay Windows

WENDELL HOMES



All information contained herein is based on the latest product information available at the time of printing. While Ainslie Group makes all reasonable efforts to provide accurate information, we also maintain the right to improve upon our designs at any time. As a result, there are no guarantees or warranties of prices, plans, specifications or materials represented in this brochure. Furthermore, we do not assume any liability for the accuracy or completeness of the illustrations and specifications presented. Illustrations are artists' interpretations only and are not meant to be an exact interpretation. This brochure shall not be relied upon as a substitute for current information available from your authorized AG representative.



“The Bishop” Model 5718 “D”

First Floor Plan

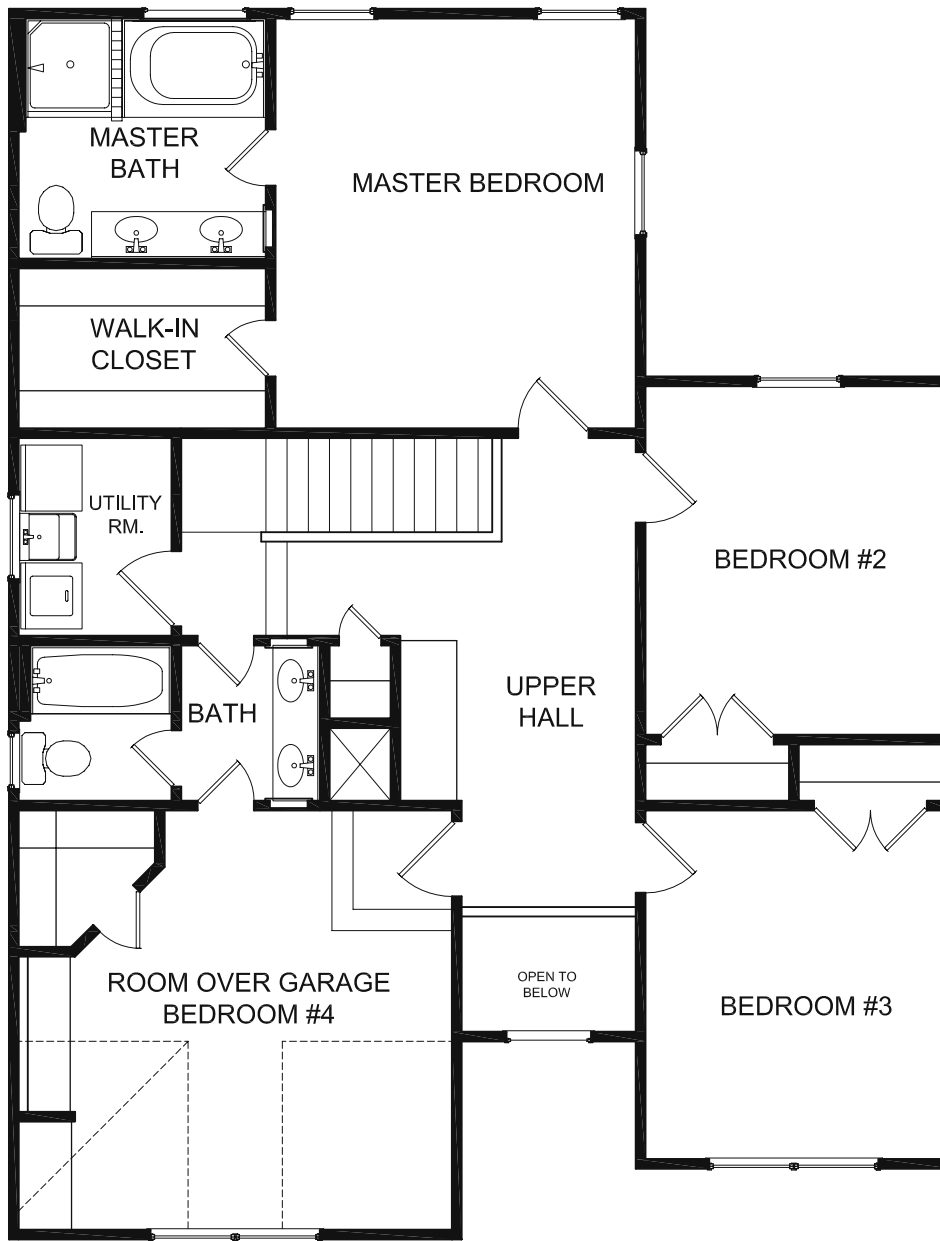
LAYOUT	
Bedrooms	4
Bathrooms	2.5

AREA	Sq.Ft.*
First Floor	806
Second Floor	970
Base Living Area	1876
1 1/2 Car Garage	331
Room Over Garage	241
Porch 'D'	27
3 Sided Bay Window	16
Patio	140

*SQUARE FOOTAGE FOR THIS HOUSE IS CALCULATED USING ANSI Z796-2003 STANDARDS. ACTUAL SQUARE FOOTAGE MAY VARY DUE TO FIELD CONDITIONS OR CUSTOMIZED FEATURES.

Not to Scale

All information contained herein is based on the latest product information available at the time of printing. While Wendell Homes makes all reasonable efforts to provide accurate information, we also maintain the right to improve upon our designs at any time. As a result, there are no guarantees or warranties of prices, plans, specifications or materials represented in this brochure. Furthermore, we do not assume any liability for the accuracy or completeness of the illustrations and specifications presented. Illustrations are artists' interpretations only and are not meant to be an exact interpretation. This brochure shall not be relied upon as a substitute for current information available from your authorized Wendell Homes representative.



“The Bishop” Model 5718 “D”

Second Floor Plan

LAYOUT	
Bedrooms	4
Bathrooms	2.5

AREA	Sq.Ft.*
First Floor	806
Second Floor	970
Base Living Area	1878
1½ Car Garage	331
Room Over Garage	241
Porch 'D'	27
3 Sided Bay Window	16
Patio	140

*SQUARE FOOTAGE FOR THE HOUSE IS CALCULATED USING ANSI Z785-2003 STANDARDS. ACTUAL SQUARE FOOTAGE MAY VARY DUE TO FIELD CONDITIONS OR CUSTOMIZED FEATURES.

Not to Scale