



Pitchkettle Farms

This new home community in Suffolk, Virginia was chosen as the site of Tidewater Builder's Association's 25th Anniversary Homearama. Conveniently located less than 1/4 mile off Highway 58, Pitchkettle Farms offers half-acre lots with plenty of room for a garden, pool, RV or boat. Choose from nine unique plans, including four plans by Award-winning Southern Living Designer Frank Betz. These plans have different elevations to choose from and include ranch and two-story style homes – some with Master Suites downstairs – and large Country Kitchens!

How do I get there?

Take I-64 West and follow to Rt. 58 West towards Suffolk. Exit at Pitchkettle Road, make a right and follow for about 1/4 mile to the entrance on the left.
Model Address: 1002 Pitchkettle Farm Lane, Suffolk, VA 23434

ainsliegroup.com
 **888.416.9335**

- "The Armstrong" Model 7180**
- "The Ellington" Model 7183**
- "The Dorsey" Model 7184**
- "The Miller" Model 7185**
- "The Goodman" Model 7187**
- "The Dewhurst" Model 6141**
- "The Donnelly" Model 6143**
- "The Whitehaven" Model 6145**
- "The Lullwater" Model 6147**

Models Available for Viewing

To schedule an appointment, please call
888.416.9335

Marketed By
Crestline Realty Corporation

"The Armstrong" Model 7180 A



Ainslie Group



All information contained herein is based on the latest product information available at the time of printing. While Ainslie Group makes all reasonable efforts to provide accurate information, we also maintain the right to improve upon our designs at any time. As a result, there are no guarantees or warranties of prices, plans, specifications or materials represented in this brochure. Furthermore, we do not assume any liability for the accuracy or completeness of the illustrations and specifications presented. Illustrations are artists' interpretations only and are not meant to be an exact interpretation. This brochure shall not be relied upon as a substitute for current information available from your authorized AG representative.

“The Armstrong” Model 7180 B

Ainslie Group



All information contained herein is based on the latest product information available at the time of printing. While Ainslie Group makes all reasonable efforts to provide accurate information, we also maintain the right to improve upon our designs at any time. As a result, there are no guarantees or warranties of prices, plans, specifications or materials represented in this brochure. Furthermore, we do not assume any liability for the accuracy or completeness of the illustrations and specifications presented. Illustrations are artists' interpretations only and are not meant to be an exact interpretation. This brochure shall not be relied upon as a substitute for current information available from your authorized AG representative.

"The Armstrong" Model 7180 F



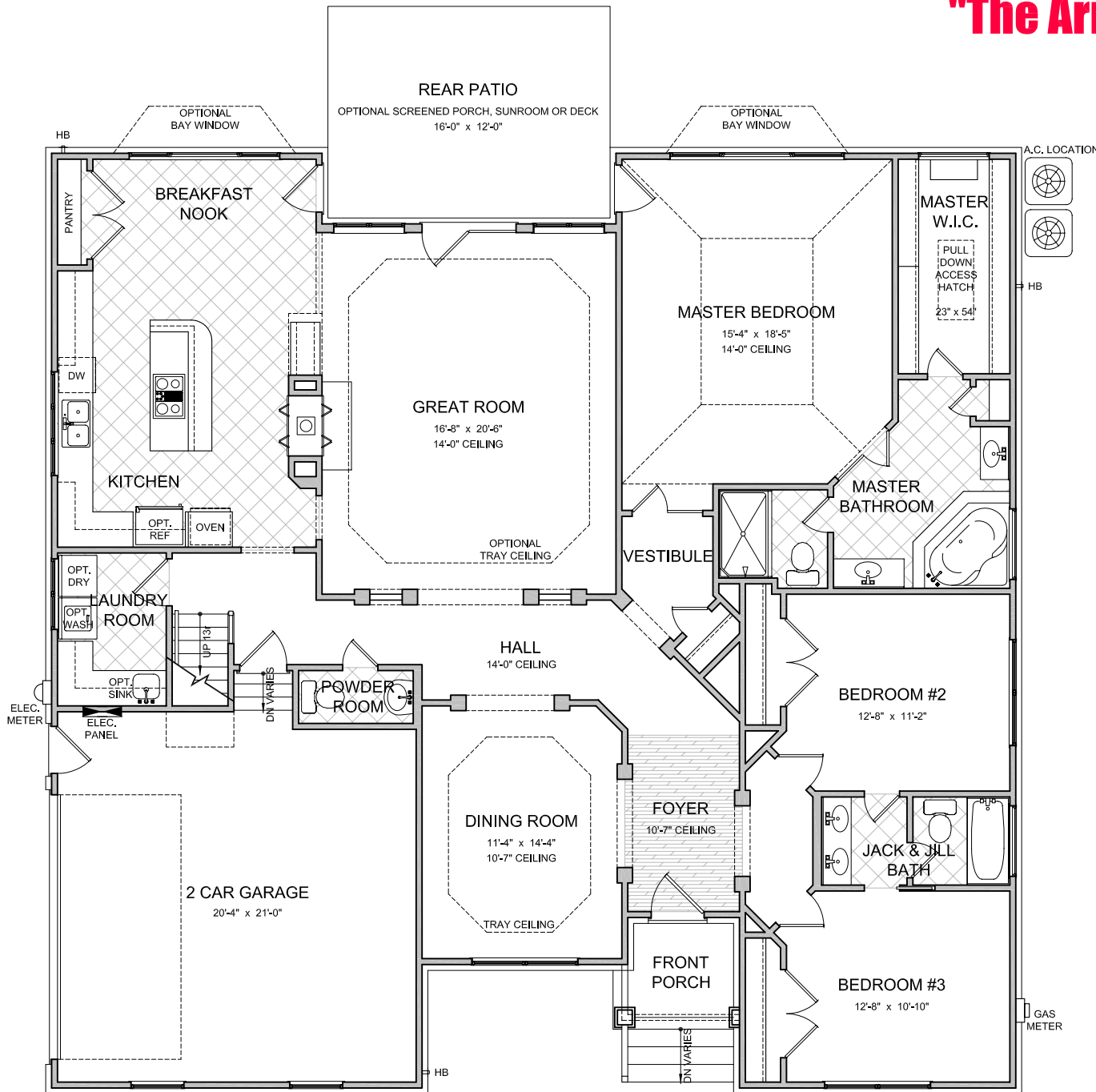
Ainslie Group



All information contained herein is based on the latest product information available at the time of printing. While Ainslie Group makes all reasonable efforts to provide accurate information, we also maintain the right to improve upon our designs at any time. As a result, there are no guarantees or warranties of prices, plans, specifications or materials represented in this brochure. Furthermore, we do not assume any liability for the accuracy or completeness of the illustrations and specifications presented. Illustrations are artists' interpretations only and are not meant to be an exact interpretation. This brochure shall not be relied upon as a substitute for current information available from your authorized AG representative.

"The Armstrong" Model 7180

First Floor Plan Elevation 'A'



LAYOUT	
Bedrooms	3
With Optional	4
Bathrooms	2.5
With Optional	3.5

AREA	Sq.Ft.*
First Floor	2244
Room Over Garage	376
Base Living Area	2620
2 Car Garage	444
Sunroom	136
Screened Porch	204
Elevation A Porch	43
Elevation B Porch	43
Elevation F Porch	125
Master Bay Window	21
Kitchen Bay Window	21

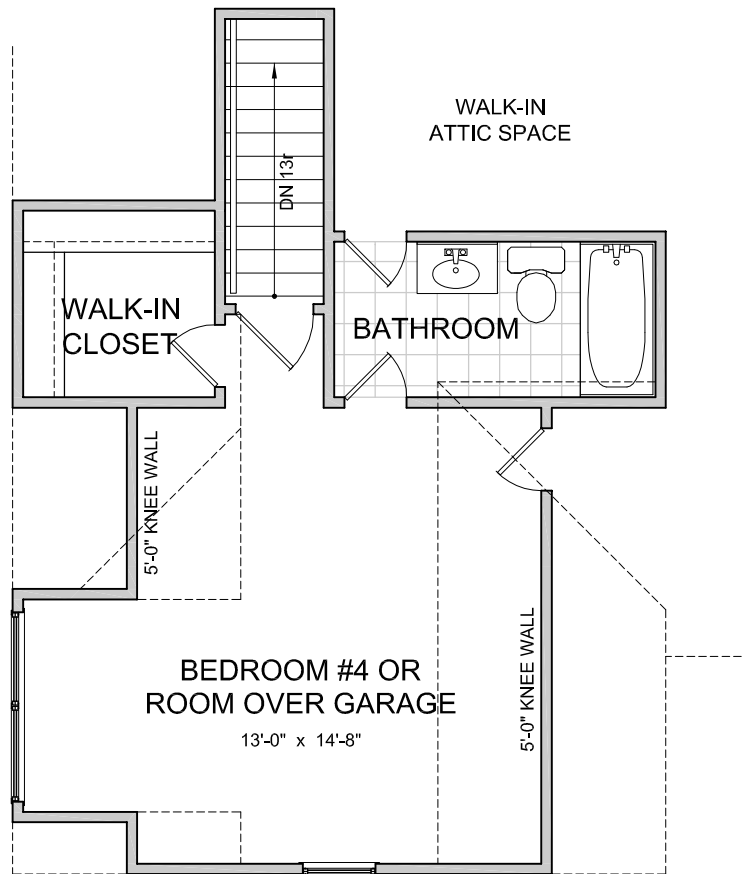
*SQUARE FOOTAGE FOR THIS HOUSE IS CALCULATED USING ANSI Z765-2003 STANDARDS. ACTUAL SQUARE FOOTAGE MAY VARY DUE TO FIELD CONDITIONS OR CUSTOMIZED FEATURES.

NOT TO SCALE
REVISION DATE: 09/30/08 jb

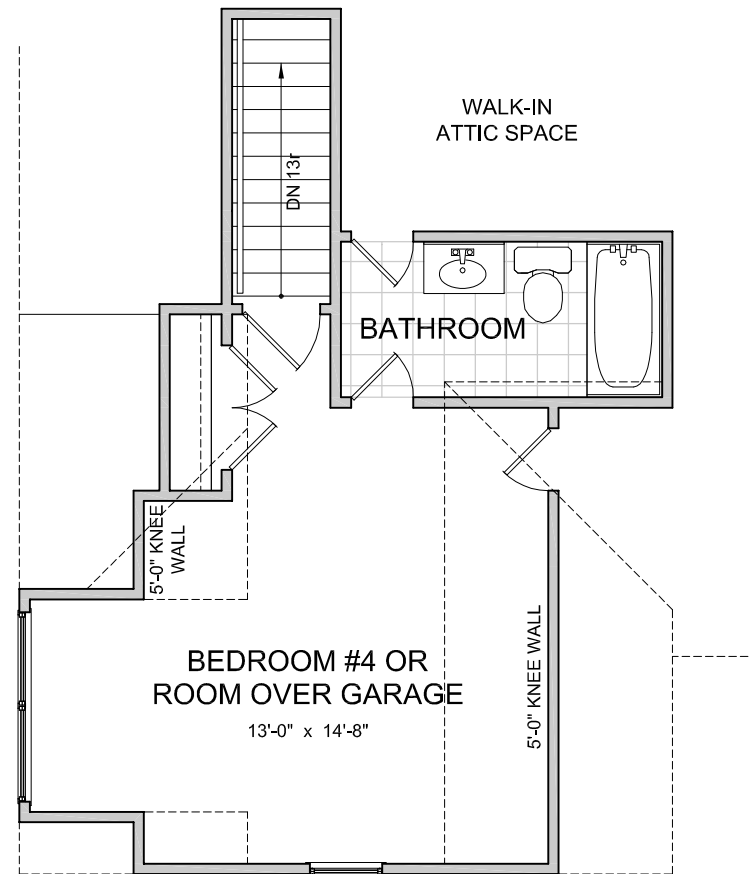
All information contained herein is based on the latest product information available at the time of printing. While Ainslie Group makes all reasonable efforts to provide accurate information, we also maintain the right to improve upon our designs at any time. As a result, there are no guarantees or warranties of prices, plans, specifications or materials represented in this brochure. Furthermore, we do not assume any liability for the accuracy or completeness of the illustrations and specifications presented. Illustrations are artists' interpretations only and are not meant to be an exact interpretation. This brochure shall not be relied upon as a substitute for current information available from your authorized AG representative.

"The Armstrong" Model 7180

Bedroom #4 Or Room Over Garage With Optional Bathroom Second Floor Plan



Elevations 'A' & 'F'

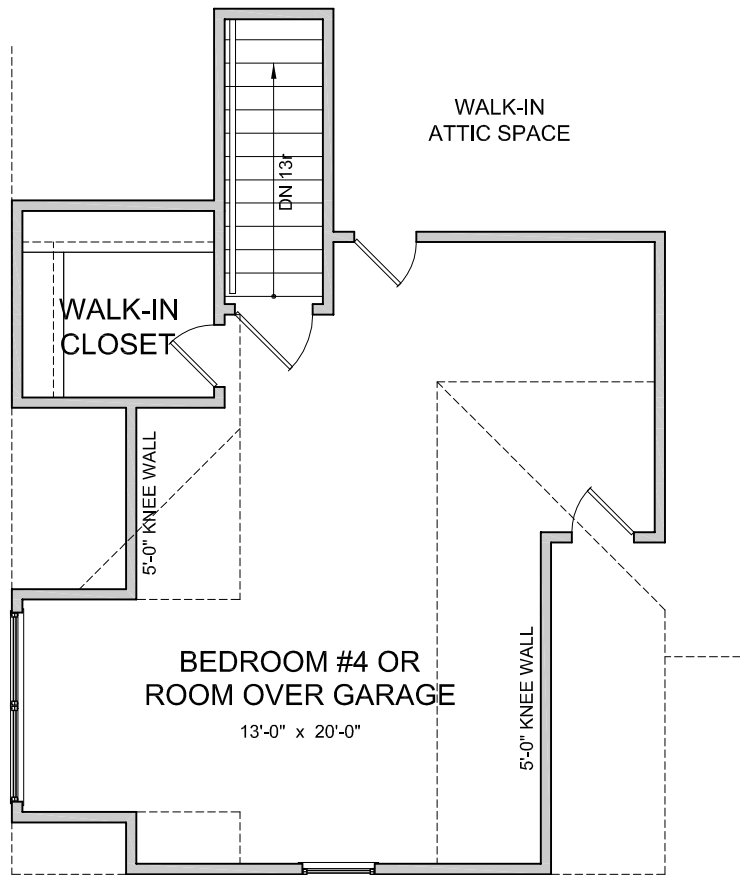


Elevation 'B'

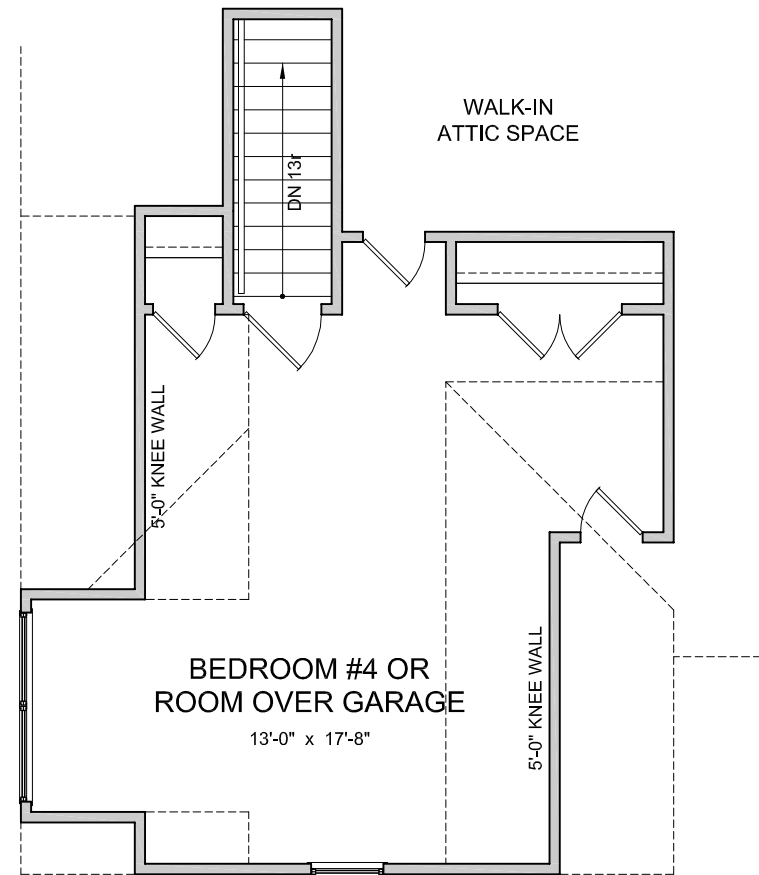
NOT TO SCALE 
REVISION DATE: 09/17/08 jb

"The Armstrong" Model 7180


Bedroom #4 Or Room Over Garage Second Floor Plan



Elevations 'A' & 'F'



Elevation 'B'

NOT TO SCALE 
REVISION DATE: 09/17/08 jb

"The Armstrong" Model 7180

Optional Gourmet Kitchen

(OPTIONAL BREAKFAST NOOK BAY WINDOW NOT AVAILABLE WITH OPTIONAL GOURMET KITCHEN)



First Floor Plan

NOT TO SCALE

REVISION DATE: 09/17/08 jb



"The Ellington" Model 7183 A



Ainslie Group



All information contained herein is based on the latest product information available at the time of printing. While Ainslie Group makes all reasonable efforts to provide accurate information, we also maintain the right to improve upon our designs at any time. As a result, there are no guarantees or warranties of prices, plans, specifications or materials represented in this brochure. Furthermore, we do not assume any liability for the accuracy or completeness of the illustrations and specifications presented. Illustrations are artists' interpretations only and are not meant to be an exact interpretation. This brochure shall not be relied upon as a substitute for current information available from your authorized AG representative.

"The Ellington" Model 7183 B



Ainslie Group



All information contained herein is based on the latest product information available at the time of printing. While Ainslie Group makes all reasonable efforts to provide accurate information, we also maintain the right to improve upon our designs at any time. As a result, there are no guarantees or warranties of prices, plans, specifications or materials represented in this brochure. Furthermore, we do not assume any liability for the accuracy or completeness of the illustrations and specifications presented. Illustrations are artists' interpretations only and are not meant to be an exact interpretation. This brochure shall not be relied upon as a substitute for current information available from your authorized AG representative.

"The Ellington" Model 7183 F



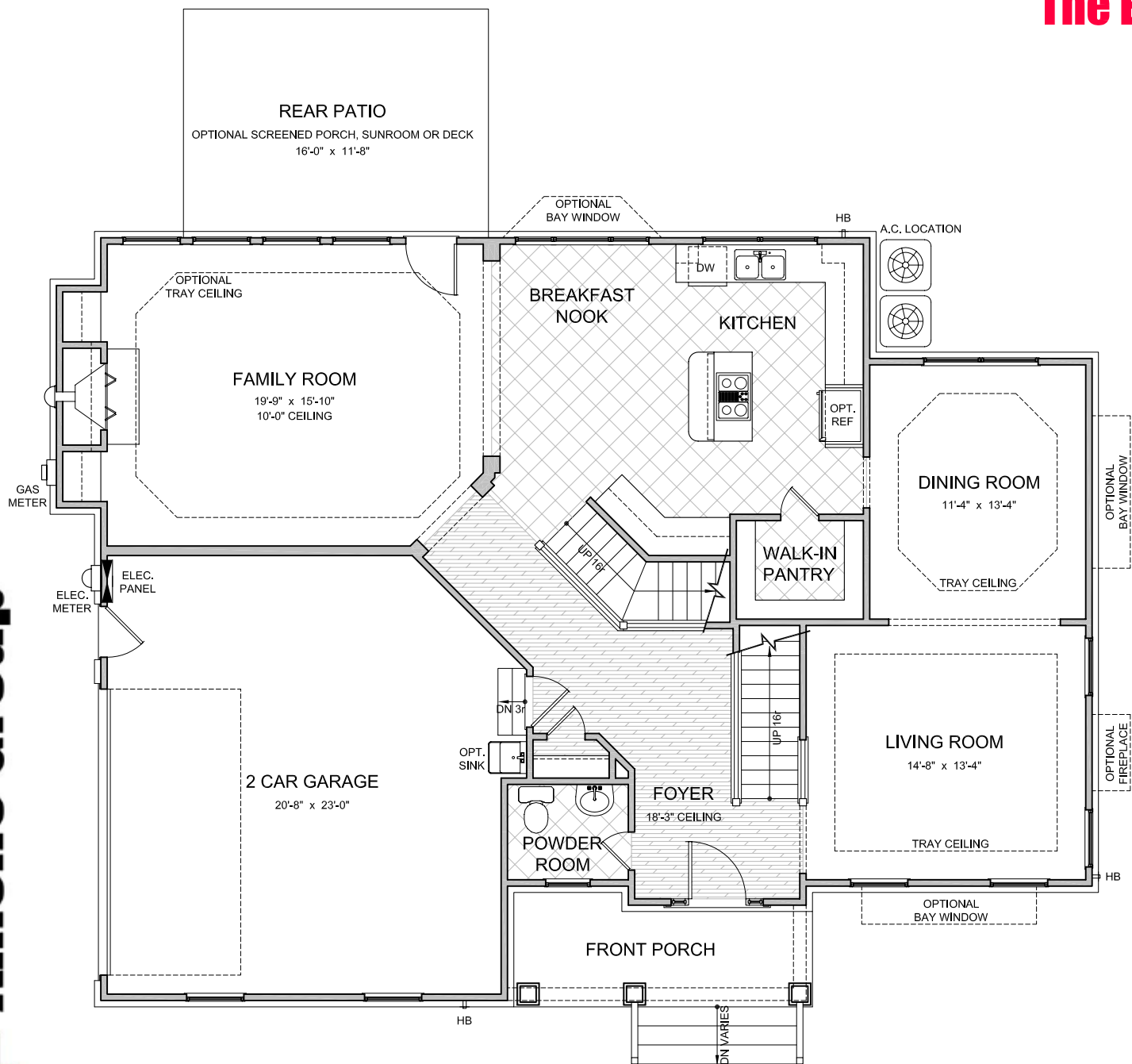
Ainslie Group



All information contained herein is based on the latest product information available at the time of printing. While Ainslie Group makes all reasonable efforts to provide accurate information, we also maintain the right to improve upon our designs at any time. As a result, there are no guarantees or warranties of prices, plans, specifications or materials represented in this brochure. Furthermore, we do not assume any liability for the accuracy or completeness of the illustrations and specifications presented. Illustrations are artists' interpretations only and are not meant to be an exact interpretation. This brochure shall not be relied upon as a substitute for current information available from your authorized AG representative.

"The Ellington" Model 7183

First Floor Plan Elevation 'A'



LAYOUT	
Bedrooms	5
Bathrooms	2.5

AREA	Sq.Ft.*
First Floor	1369
Second Floor	1622
Base Living Area	2991
2 Car Garage	490
Sunroom	188
Screened Porch	188
Elevation A Porch	92
Elevation B Porch	52
Elevation F Porch	262
Living Room Bay Window	17
Dining Room Bay Window	15
Kitchen Bay Window	13

*SQUARE FOOTAGE FOR THIS HOUSE IS CALCULATED USING ANSI Z765-2003 STANDARDS. ACTUAL SQUARE FOOTAGE MAY VARY DUE TO FIELD CONDITIONS OR CUSTOMIZED FEATURES.

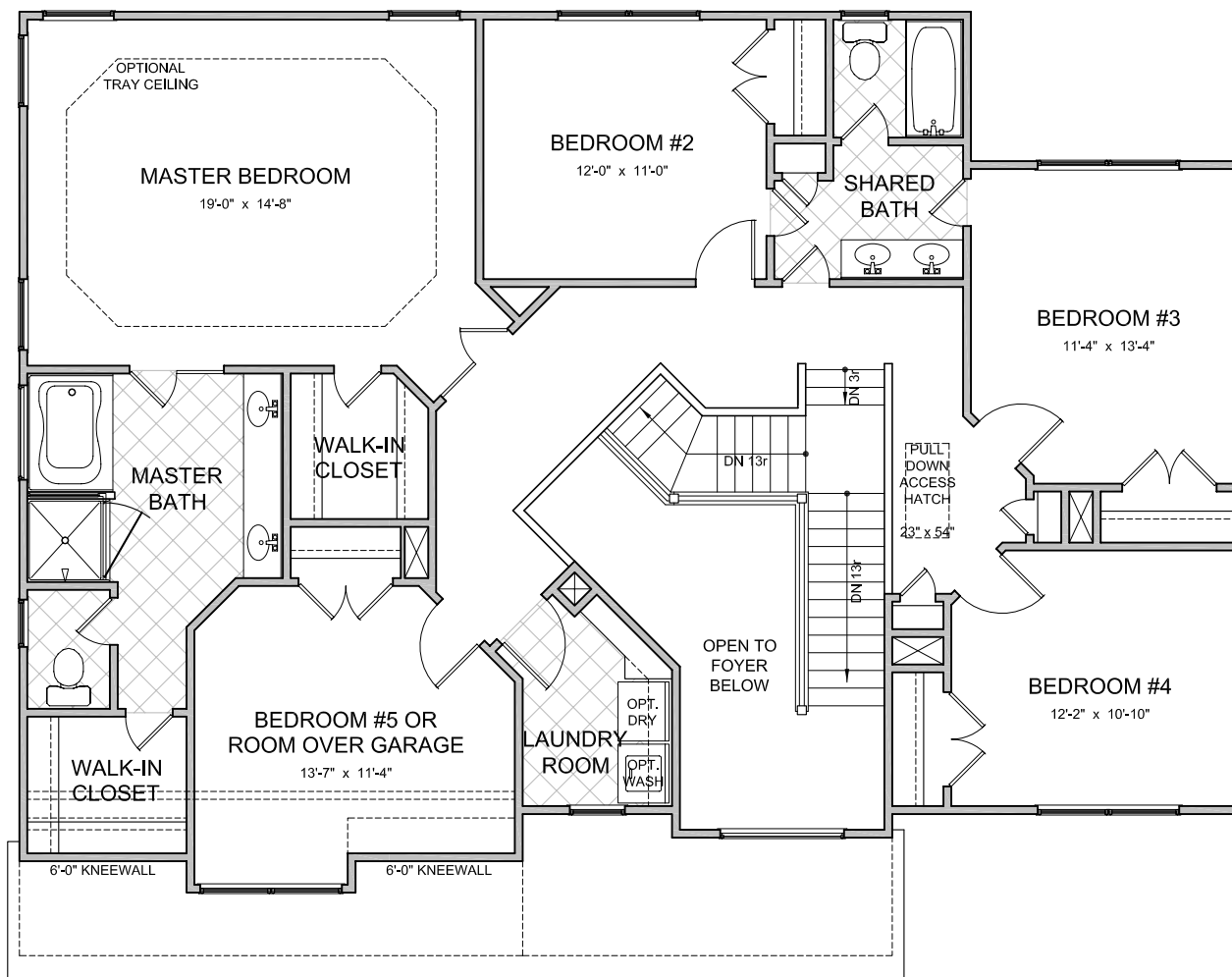
NOT TO SCALE

REVISION DATE: 09/30/08 jh



"The Ellington" Model 7183

Second Floor Plan Elevation 'A'



LAYOUT	
Bedrooms	5
Bathrooms	2.5

AREA	Sq.Ft.*
First Floor	1369
Second Floor	1622
Base Living Area	2991
2 Car Garage	490
Sunroom	188
Screened Porch	188
Elevation A Porch	92
Elevation B Porch	52
Elevation F Porch	262
Living Room Bay Window	17
Dining Room Bay Window	15
Kitchen Bay Window	13

*SQUARE FOOTAGE FOR THIS HOUSE IS CALCULATED USING ANSI Z765-2003 STANDARDS. ACTUAL SQUARE FOOTAGE MAY VARY DUE TO FIELD CONDITIONS OR CUSTOMIZED FEATURES

NOT TO SCALE

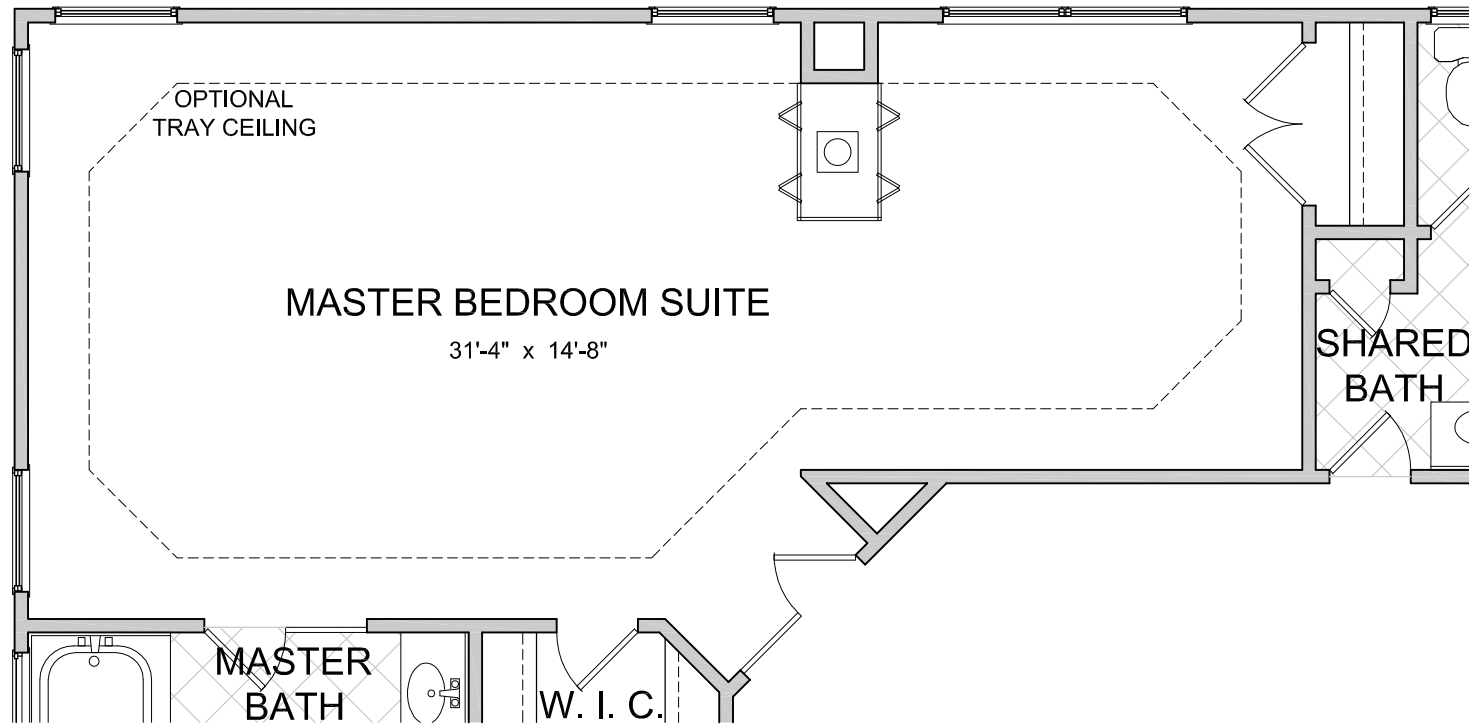
REVISION DATE: 09/17/08 jb





"The Ellington" Model 7183

Optional Master Bedroom Suite



Second Floor Plan

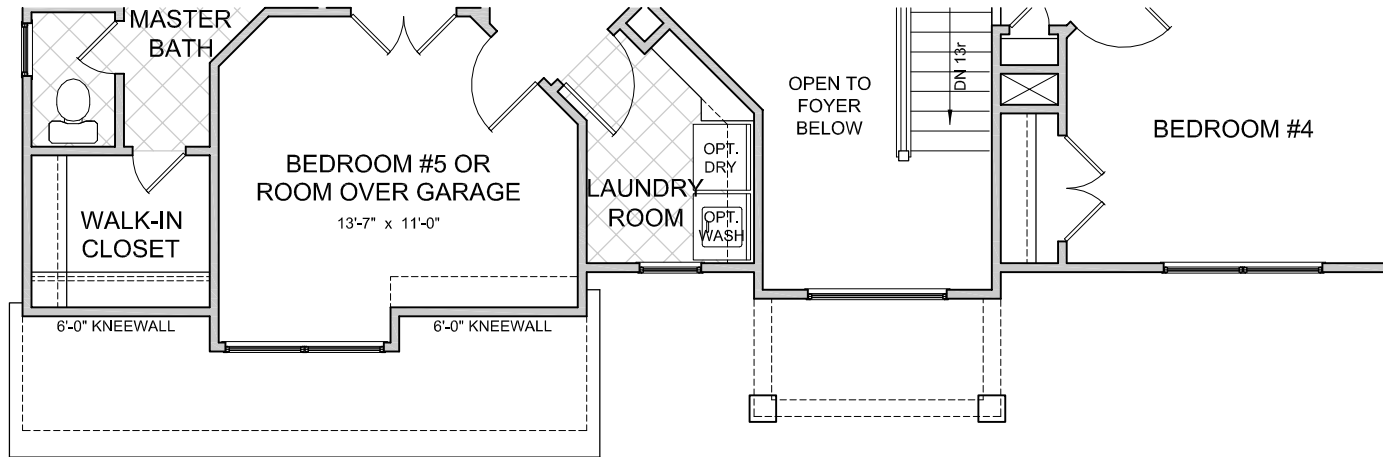
NOT TO SCALE

REVISION DATE: 09/17/08 jb

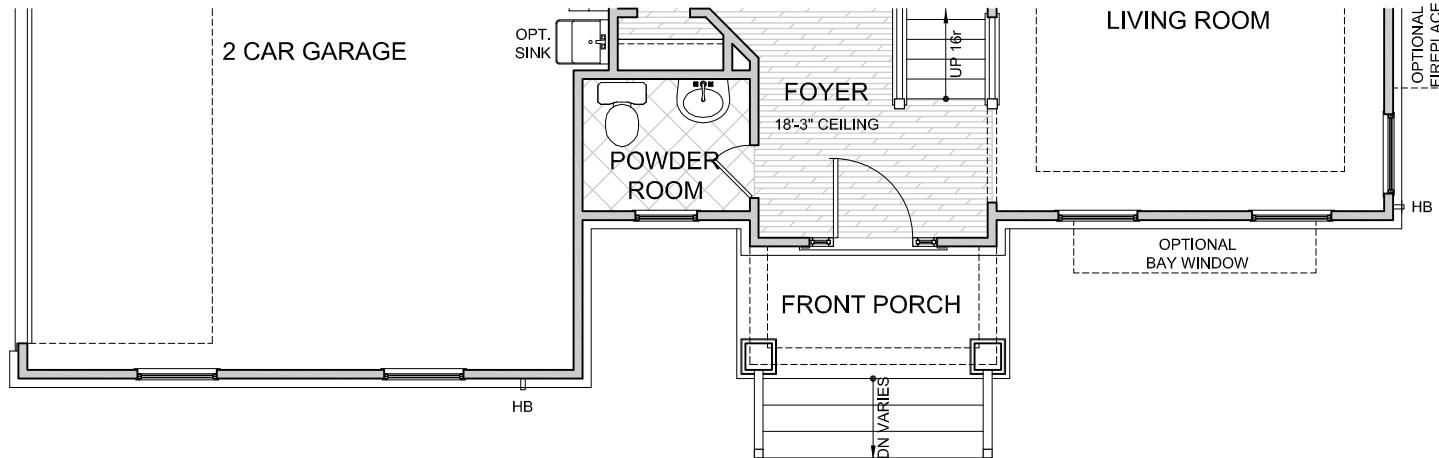


"The Ellington" Model 7183

Elevation 'B'



Second Floor Plan



First Floor Plan

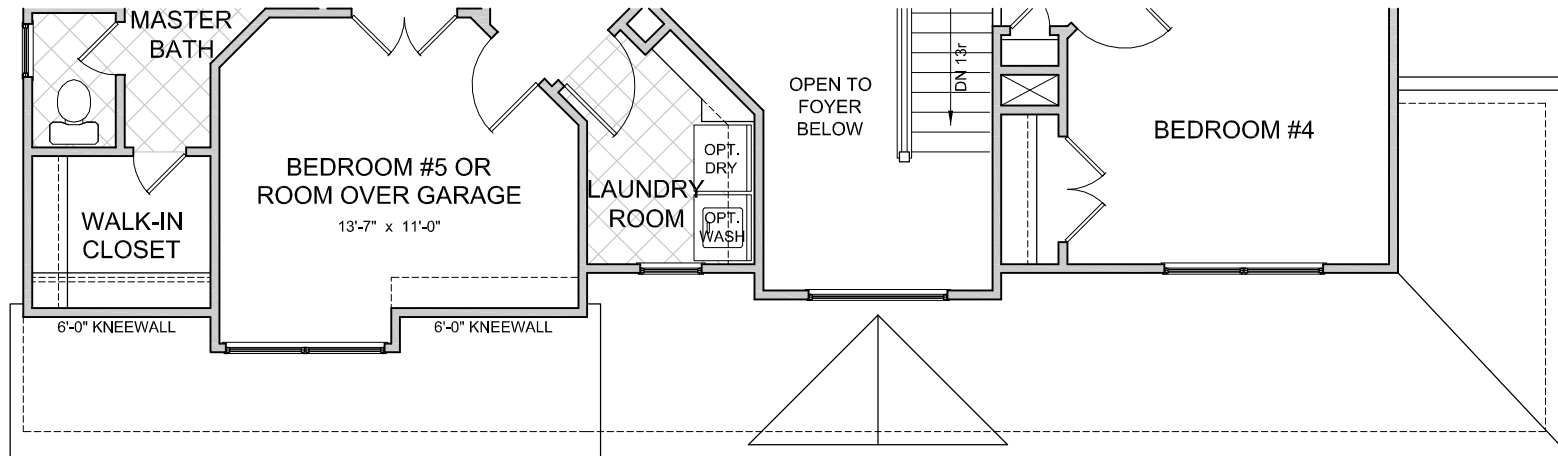
NOT TO SCALE

REVISION DATE: 09/30/08

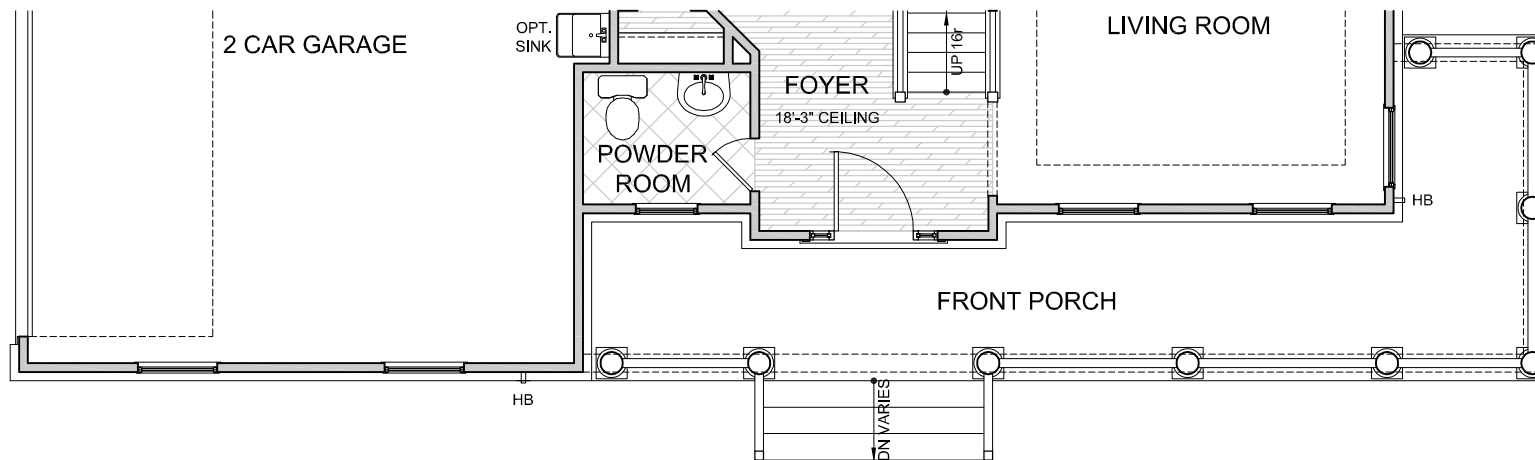


"The Ellington" Model 7183


Elevation 'F'



Second Floor Plan



First Floor Plan

NOT TO SCALE
 REVISION DATE: 09/30/08 



"The Dorsy" Model 7184 A



Ainslie Group



All information contained herein is based on the latest product information available at the time of printing. While Ainslie Group makes all reasonable efforts to provide accurate information, we also maintain the right to improve upon our designs at any time. As a result, there are no guarantees or warranties of prices, plans, specifications or materials represented in this brochure. Furthermore, we do not assume any liability for the accuracy or completeness of the illustrations and specifications presented. Illustrations are artists' interpretations only and are not meant to be an exact interpretation. This brochure shall not be relied upon as a substitute for current information available from your authorized AG representative.

"The Dorsy" Model 7184 E



Ainslie Group



All information contained herein is based on the latest product information available at the time of printing. While Ainslie Group makes all reasonable efforts to provide accurate information, we also maintain the right to improve upon our designs at any time. As a result, there are no guarantees or warranties of prices, plans, specifications or materials represented in this brochure. Furthermore, we do not assume any liability for the accuracy or completeness of the illustrations and specifications presented. Illustrations are artists' interpretations only and are not meant to be an exact interpretation. This brochure shall not be relied upon as a substitute for current information available from your authorized AG representative.

"The Dorsy" Model 7184 J



Ainslie Group



All information contained herein is based on the latest product information available at the time of printing. While Ainslie Group makes all reasonable efforts to provide accurate information, we also maintain the right to improve upon our designs at any time. As a result, there are no guarantees or warranties of prices, plans, specifications or materials represented in this brochure. Furthermore, we do not assume any liability for the accuracy or completeness of the illustrations and specifications presented. Illustrations are artists' interpretations only and are not meant to be an exact interpretation. This brochure shall not be relied upon as a substitute for current information available from your authorized AG representative.

"The Dorsey" Model 7184

First Floor Plan Elevation 'A'



LAYOUT	
Bedrooms	6
Bathrooms	3

AREA	Sq.Ft.*
------	---------

First Floor	1595
Second Floor	1868

Base Living Area 3463

2 Car Garage	504
--------------	-----

Sunroom	221
---------	-----

Screened Porch	221
----------------	-----

Elevation A Porch	44
Elevation E Porch	201
Elevation J Porch	402

Living Room Bay Window	13
Dining Room Bay Window	13
Bedroom #6 Bay Window	13

*SQUARE FOOTAGE FOR THIS HOUSE IS CALCULATED USING ANSI Z765-2003 STANDARDS. ACTUAL SQUARE FOOTAGE MAY VARY DUE TO FIELD CONDITIONS OR CUSTOMIZED FEATURES.

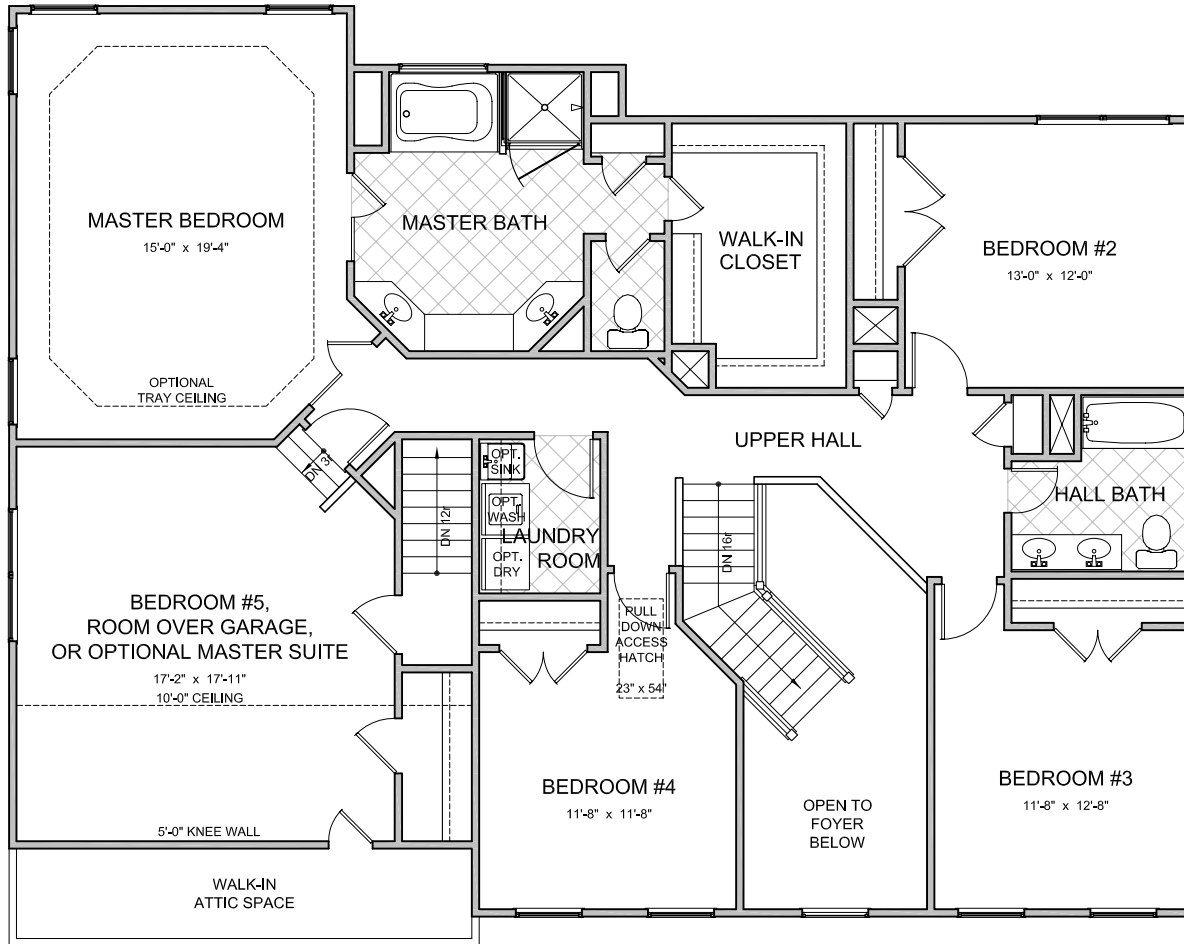
NOT TO SCALE

REVISION DATE: 09/30/08

All information contained herein is based on the latest product information available at the time of printing. While Ainslie Group makes all reasonable efforts to provide accurate information, we also maintain the right to improve upon our designs at any time. As a result, there are no guarantees or warranties of prices, plans, specifications or materials represented in this brochure. Furthermore, we do not assume any liability for the accuracy or completeness of the illustrations and specifications presented. Illustrations are artists' interpretations only and are not meant to be an exact interpretation. This brochure shall not be relied upon as a substitute for current information available from your authorized AG representative.

"The Dorsey" Model 7184

Second Floor Plan Elevation 'A'



LAYOUT	
Bedrooms	6
Bathrooms	3

AREA	Sq.Ft.*
First Floor	1595
Second Floor	1868
Base Living Area	3463
2 Car Garage	504
Sunroom	221
Screened Porch	221
Elevation A Porch	44
Elevation E Porch	201
Elevation J Porch	402
Living Room Bay Window	13
Dining Room Bay Window	13
Bedroom #6 Bay Window	13

*SQUARE FOOTAGE FOR THIS HOUSE IS CALCULATED USING ANSI Z765-2003 STANDARDS. ACTUAL SQUARE FOOTAGE MAY VARY DUE TO FIELD CONDITIONS OR CUSTOMIZED FEATURES.

NOT TO SCALE

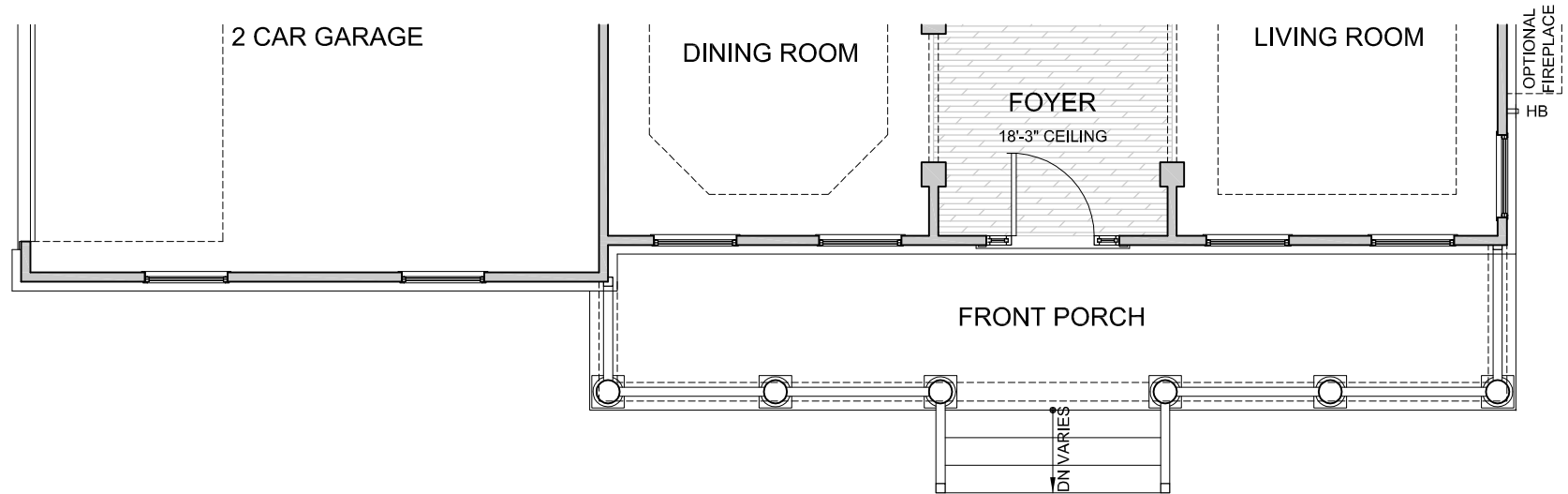
REVISION DATE: 09/17/08 jlb





"The Dorsey" Model 7184

Elevation 'E'



First Floor Plan

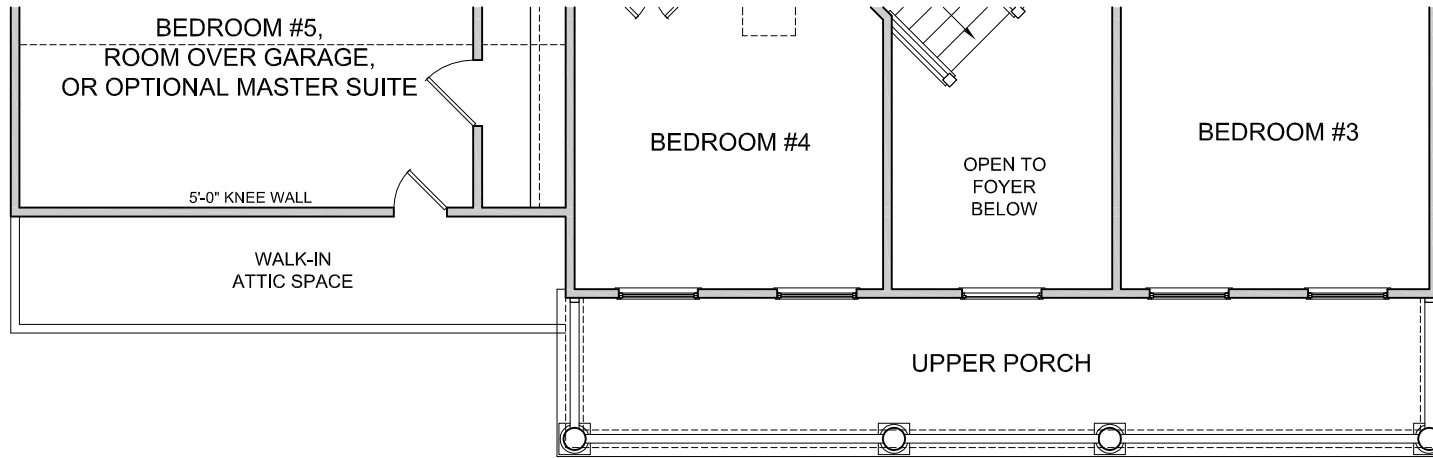
NOT TO SCALE

REVISION DATE: 09/30/08 jfb

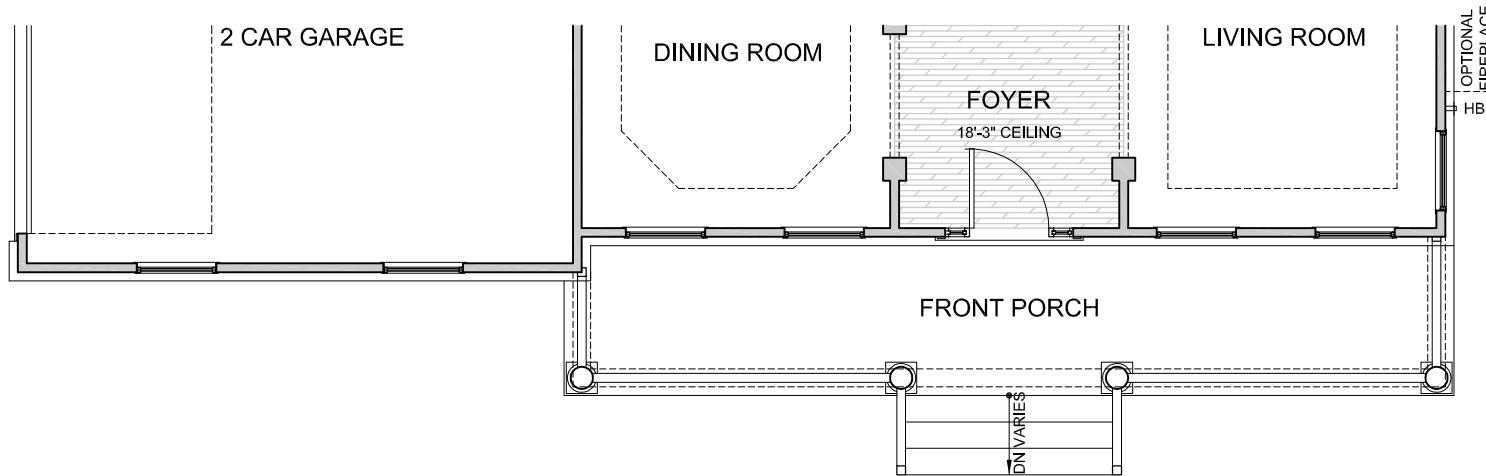


"The Dorsey" Model 7184

Elevation 'J'



Second Floor Plan



First Floor Plan

NOT TO SCALE

REVISION DATE: 09/30/08 jb



"The Miller" Model 7185 A



Ainslie Group



All information contained herein is based on the latest product information available at the time of printing. While Ainslie Group makes all reasonable efforts to provide accurate information, we also maintain the right to improve upon our designs at any time. As a result, there are no guarantees or warranties of prices, plans, specifications or materials represented in this brochure. Furthermore, we do not assume any liability for the accuracy or completeness of the illustrations and specifications presented. Illustrations are artists' interpretations only and are not meant to be an exact interpretation. This brochure shall not be relied upon as a substitute for current information available from your authorized AG representative.

"The Miller" Model 7185 B



Ainslie Group



All information contained herein is based on the latest product information available at the time of printing. While Ainslie Group makes all reasonable efforts to provide accurate information, we also maintain the right to improve upon our designs at any time. As a result, there are no guarantees or warranties of prices, plans, specifications or materials represented in this brochure. Furthermore, we do not assume any liability for the accuracy or completeness of the illustrations and specifications presented. Illustrations are artists' interpretations only and are not meant to be an exact interpretation. This brochure shall not be relied upon as a substitute for current information available from your authorized AG representative.

"The Miller" Model 7185 E



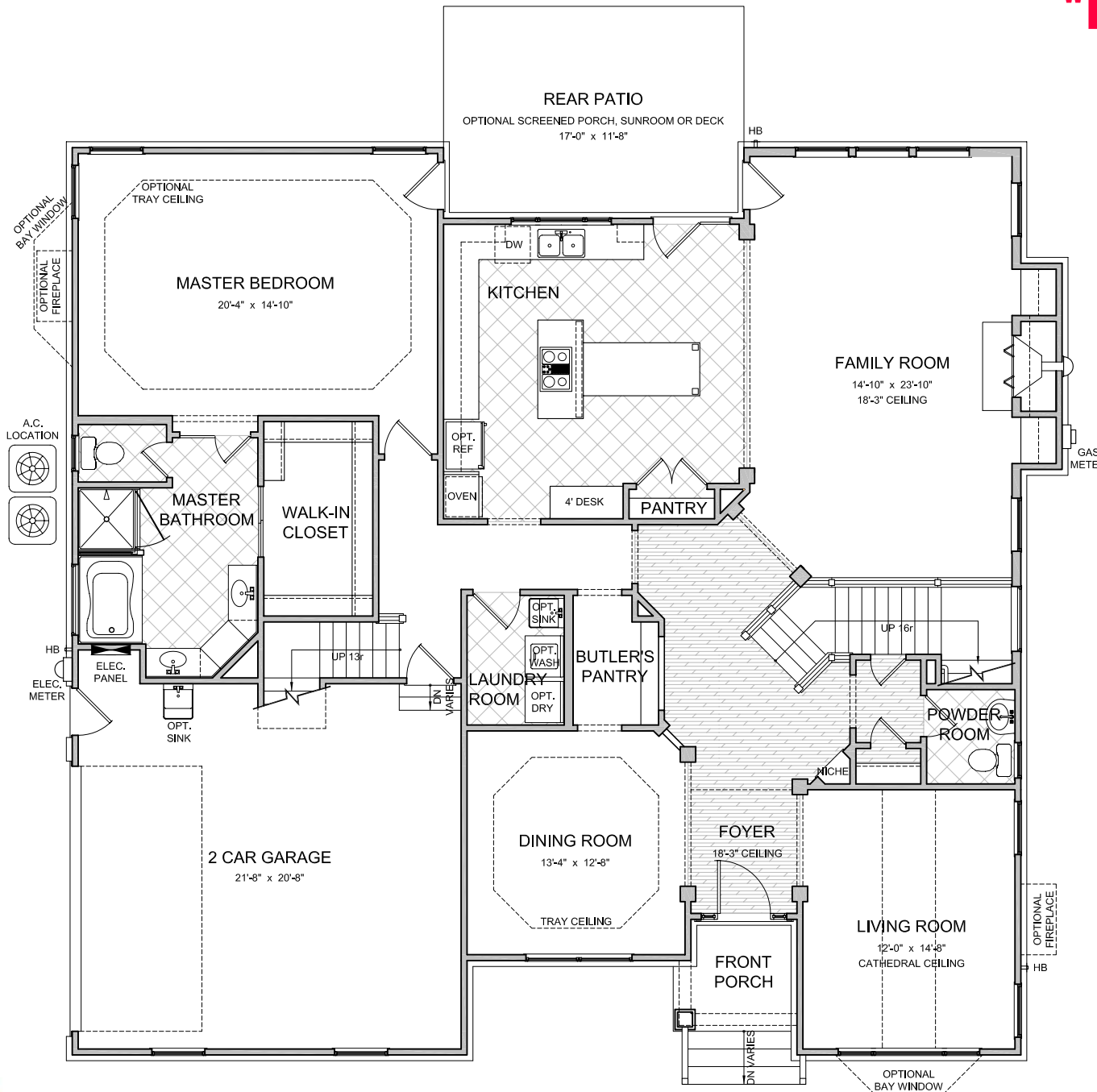
Ainslie Group



All information contained herein is based on the latest product information available at the time of printing. While Ainslie Group makes all reasonable efforts to provide accurate information, we also maintain the right to improve upon our designs at any time. As a result, there are no guarantees or warranties of prices, plans, specifications or materials represented in this brochure. Furthermore, we do not assume any liability for the accuracy or completeness of the illustrations and specifications presented. Illustrations are artists' interpretations only and are not meant to be an exact interpretation. This brochure shall not be relied upon as a substitute for current information available from your authorized AG representative.

"The Miller" Model 7185

First Floor Plan Elevation 'A'



LAYOUT	
Bedrooms	4
With Optional	5
Bathrooms	2.5
With Optional	3.5

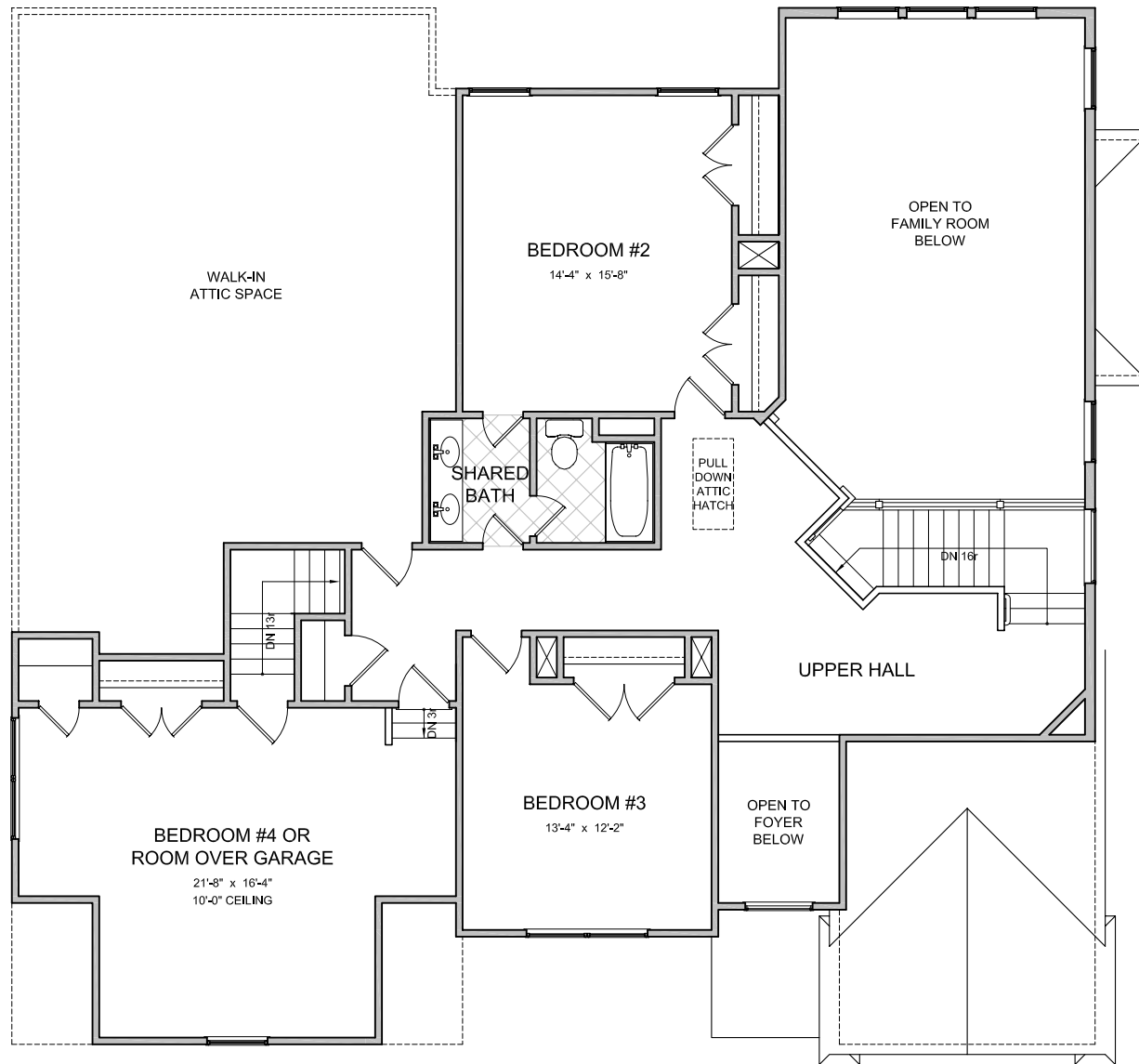
AREA	Sq.Ft.*
First Floor	2174
Second Floor	1336
w/ Optional Master Bedroom	1886
Base Living Area	3510
w/ Optional Master	4060
2 Car Garage	467
Sunroom	221
Screened Porch	221
Elevation A Porch	42
Elevation B Porch	42
Elevation E Porch	107
Master Bay Window	15
Living Room Bay Window	13

*SQUARE FOOTAGE FOR THIS HOUSE IS CALCULATED USING ANSI Z765-2003 STANDARDS
ACTUAL SQUARE FOOTAGE MAY VARY DUE TO FIELD CONDITIONS OR CUSTOMIZED FEATURES

NOT TO SCALE
REVISION DATE: 09/30/08 jb

"The Miller" Model 7185

Second Floor Plan Elevation 'A'



LAYOUT	
Bedrooms	4
With Optional	5
Bathrooms	2.5
With Optional	3.5

AREA	Sq.Ft.*
First Floor	2174
Second Floor	1336
w/ Optional Master Bedroom	1886
Base Living Area	3510
w/ Optional Master	4060
2 Car Garage	467
Sunroom	221
Screened Porch	221
Elevation A Porch	42
Elevation B Porch	42
Elevation E Porch	107
Master Bay Window	15
Living Room Bay Window	13

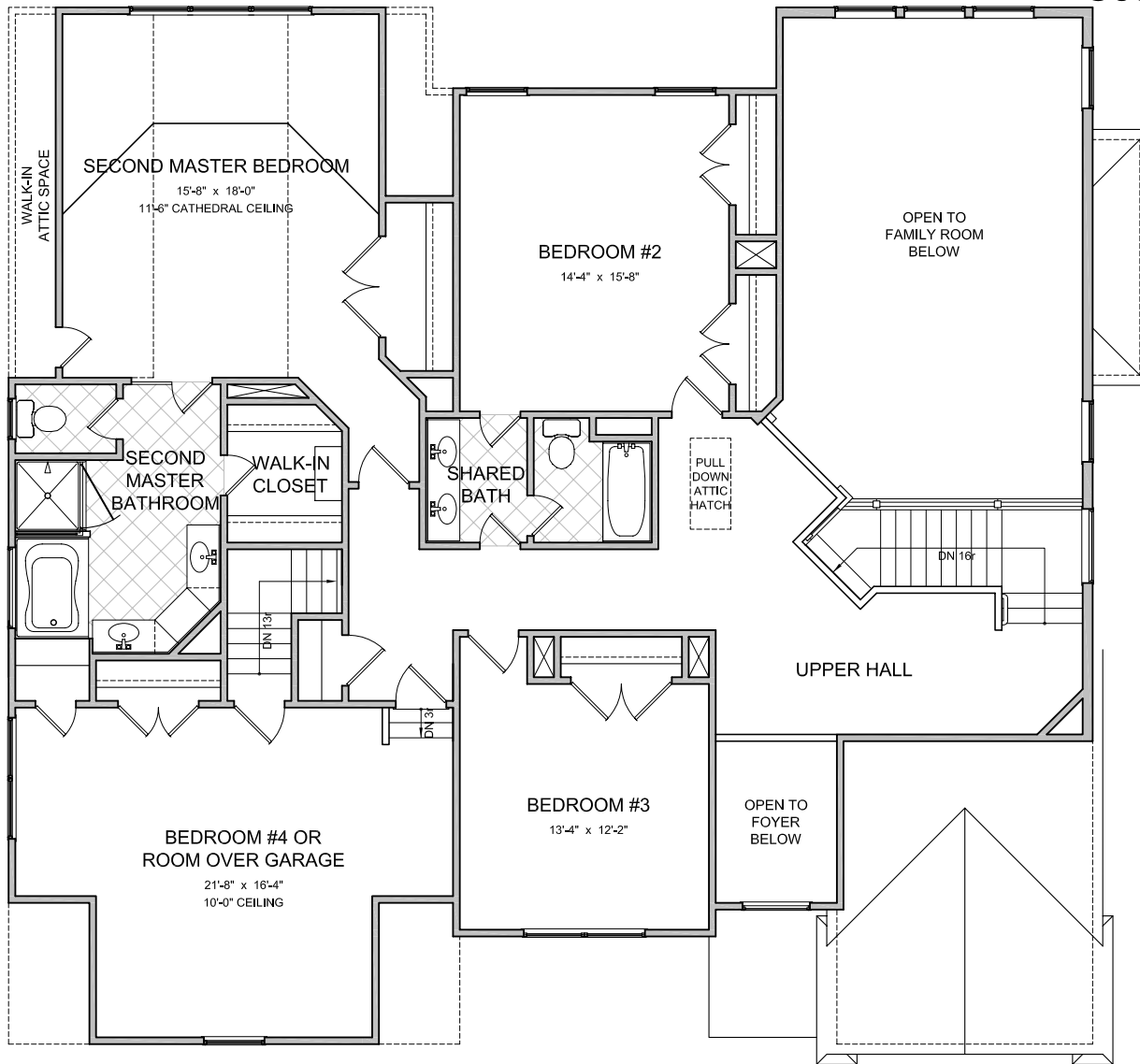
*SQUARE FOOTAGE FOR THIS HOUSE IS CALCULATED USING ANSI Z765-2003 STANDARDS. ACTUAL SQUARE FOOTAGE MAY VARY DUE TO FIELD CONDITIONS OR CUSTOMIZED FEATURES.

NOT TO SCALE 

REVISION DATE: 09/17/08 jb

"The Miller" Model 7185

Second Floor Plan With Optional Second Master Bedroom Elevation 'A'



LAYOUT	
Bedrooms	4
With Optional	5
Bathrooms	2.5
With Optional	3.5

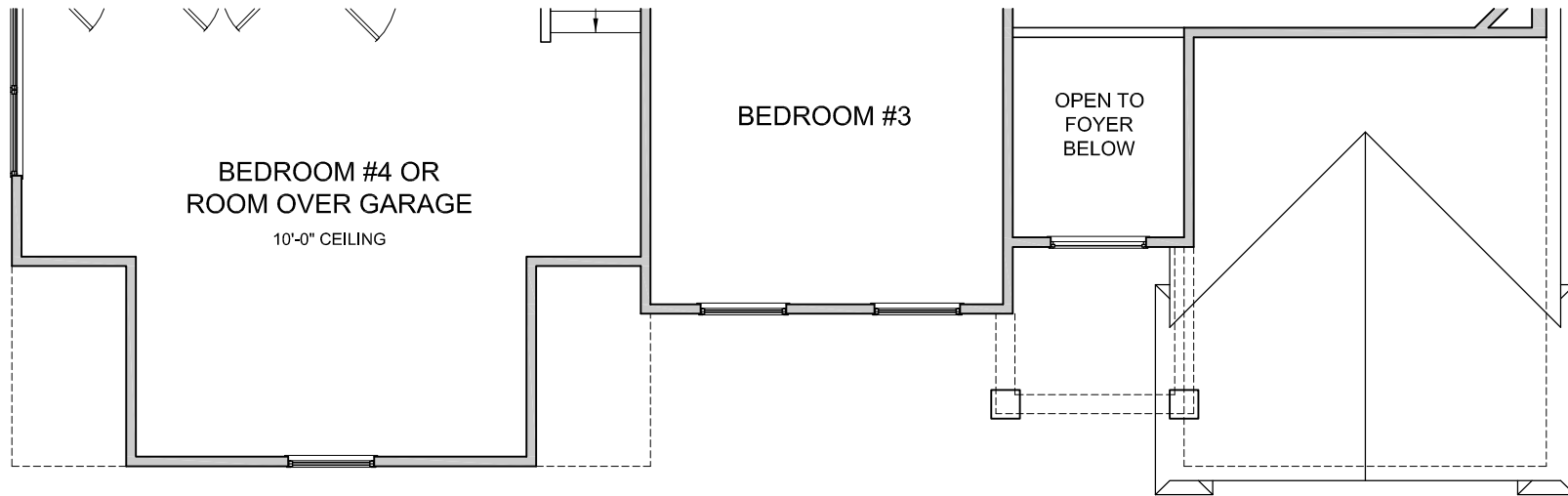
AREA	Sq.Ft.*
First Floor	2174
Second Floor	1336
w/ Optional Master Bedroom	1886
Base Living Area	3510
w/ Optional Master	4060
2 Car Garage	467
Sunroom	221
Screened Porch	221
Elevation A Porch	42
Elevation B Porch	42
Elevation E Porch	107
Master Bay Window	15
Living Room Bay Window	13

*SQUARE FOOTAGE FOR THIS HOUSE IS CALCULATED USING ANSI Z765-2003 STANDARDS. ACTUAL SQUARE FOOTAGE MAY VARY DUE TO FIELD CONDITIONS OR CUSTOMIZED FEATURES

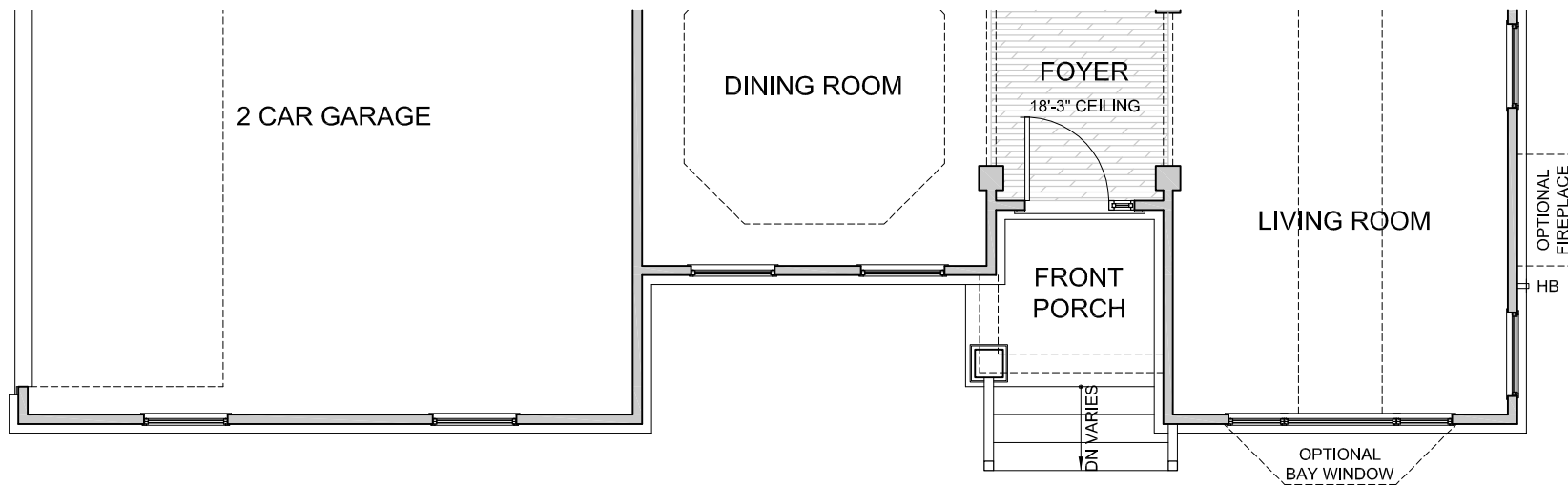
NOT TO SCALE
 REVISION DATE: 09/17/08 jb

"The Miller" Model 7185

Elevation 'B'



Second Floor Plan



First Floor Plan

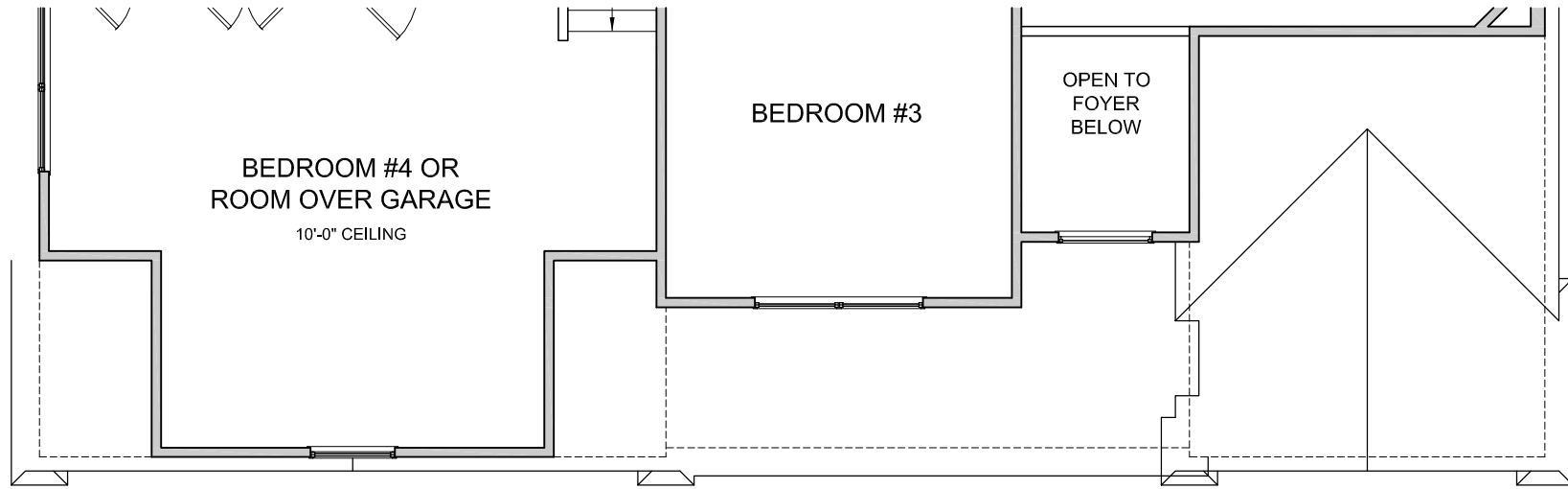
NOT TO SCALE

REVISION DATE: 09/30/08 jb

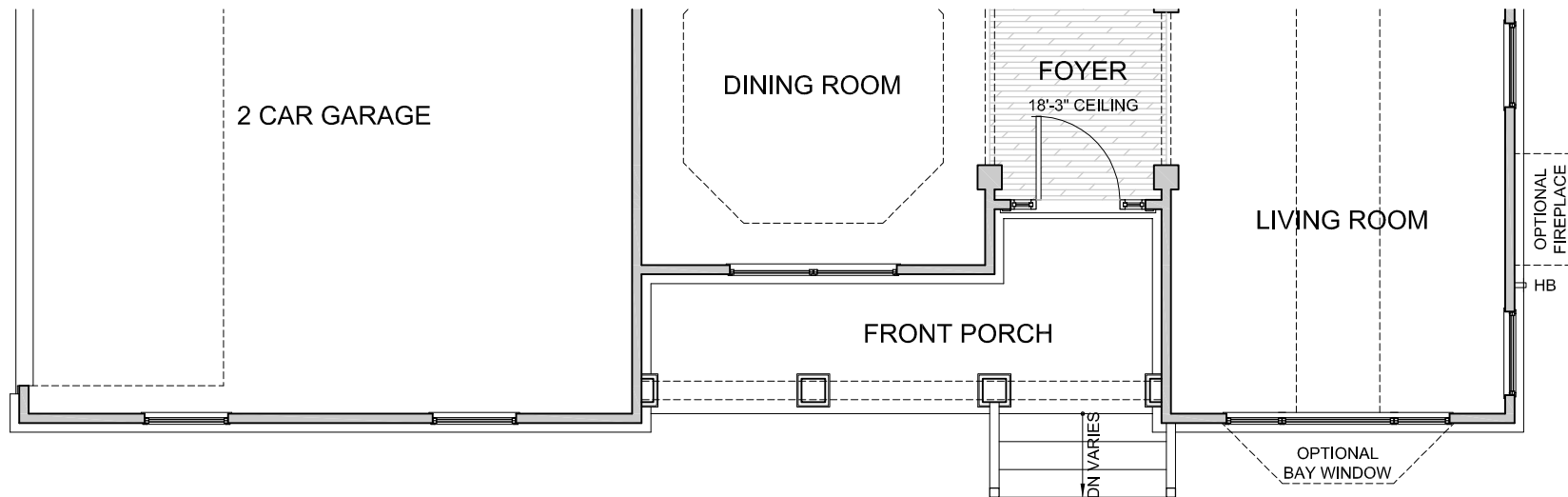


"The Miller" Model 7185

Elevation 'E'



Second Floor Plan



First Floor Plan

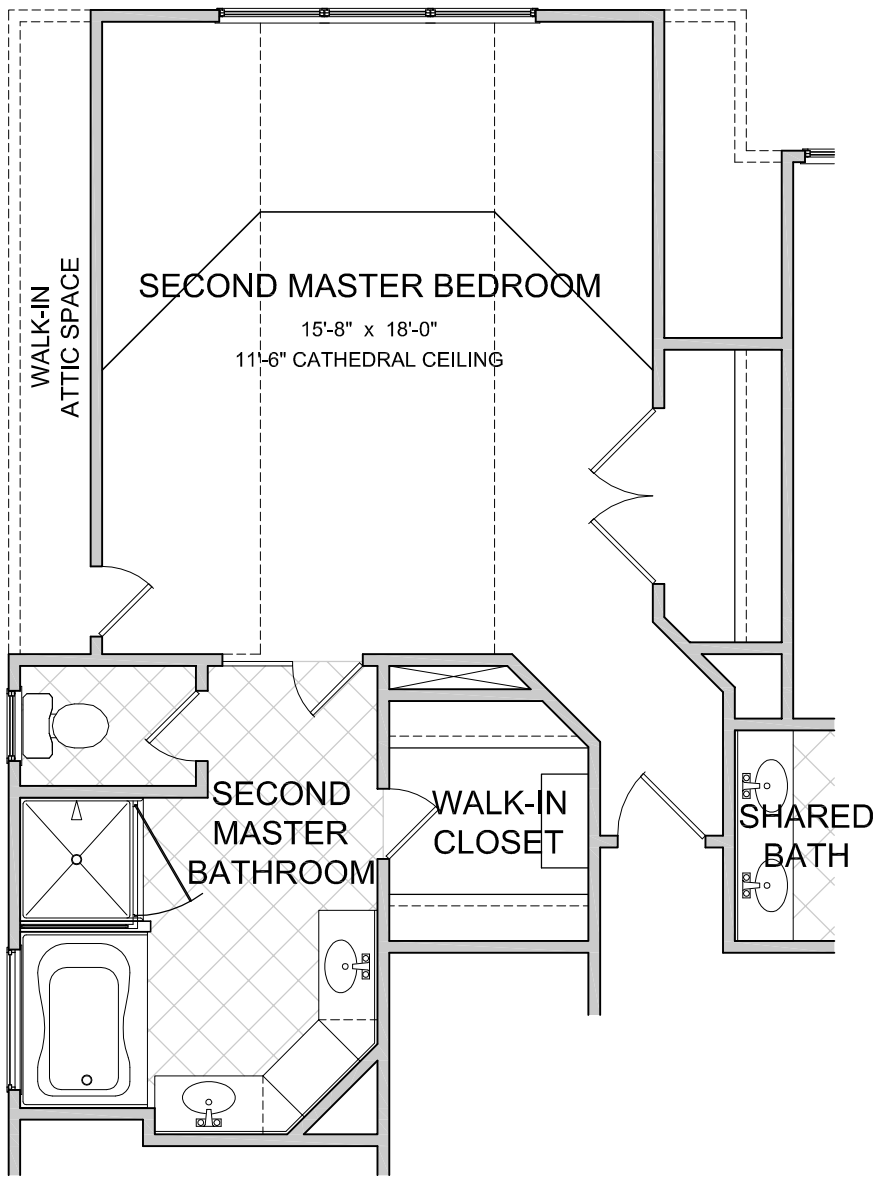
NOT TO SCALE

REVISION DATE: 09/30/08



"The Miller" Model 7185

Optional Master Bedroom



Second Floor Plan

NOT TO SCALE 
REVISION DATE: 09/17/08 jb

All information contained herein is based on the latest product information available at the time of printing. While Ainslie Group makes all reasonable efforts to provide accurate information, we also maintain the right to improve upon our designs at any time. As a result, there are no guarantees or warranties of prices, plans, specifications or materials represented in this brochure. Furthermore, we do not assume any liability for the accuracy or completeness of the illustrations and specifications presented. Illustrations are artists' interpretations only and are not meant to be an exact interpretation. This brochure shall not be relied upon as a substitute for current information available from your authorized AG representative.

"The Goodman" Model 7187 A



Ainslie Group



All information contained herein is based on the latest product information available at the time of printing. While Ainslie Group makes all reasonable efforts to provide accurate information, we also maintain the right to improve upon our designs at any time. As a result, there are no guarantees or warranties of prices, plans, specifications or materials represented in this brochure. Furthermore, we do not assume any liability for the accuracy or completeness of the illustrations and specifications presented. Illustrations are artists' interpretations only and are not meant to be an exact interpretation. This brochure shall not be relied upon as a substitute for current information available from your authorized AG representative.

"The Goodman" Model 7187 B



Ainslie Group



All information contained herein is based on the latest product information available at the time of printing. While Ainslie Group makes all reasonable efforts to provide accurate information, we also maintain the right to improve upon our designs at any time. As a result, there are no guarantees or warranties of prices, plans, specifications or materials represented in this brochure. Furthermore, we do not assume any liability for the accuracy or completeness of the illustrations and specifications presented. Illustrations are artists' interpretations only and are not meant to be an exact interpretation. This brochure shall not be relied upon as a substitute for current information available from your authorized AG representative.

"The Goodman" Model 7187 F



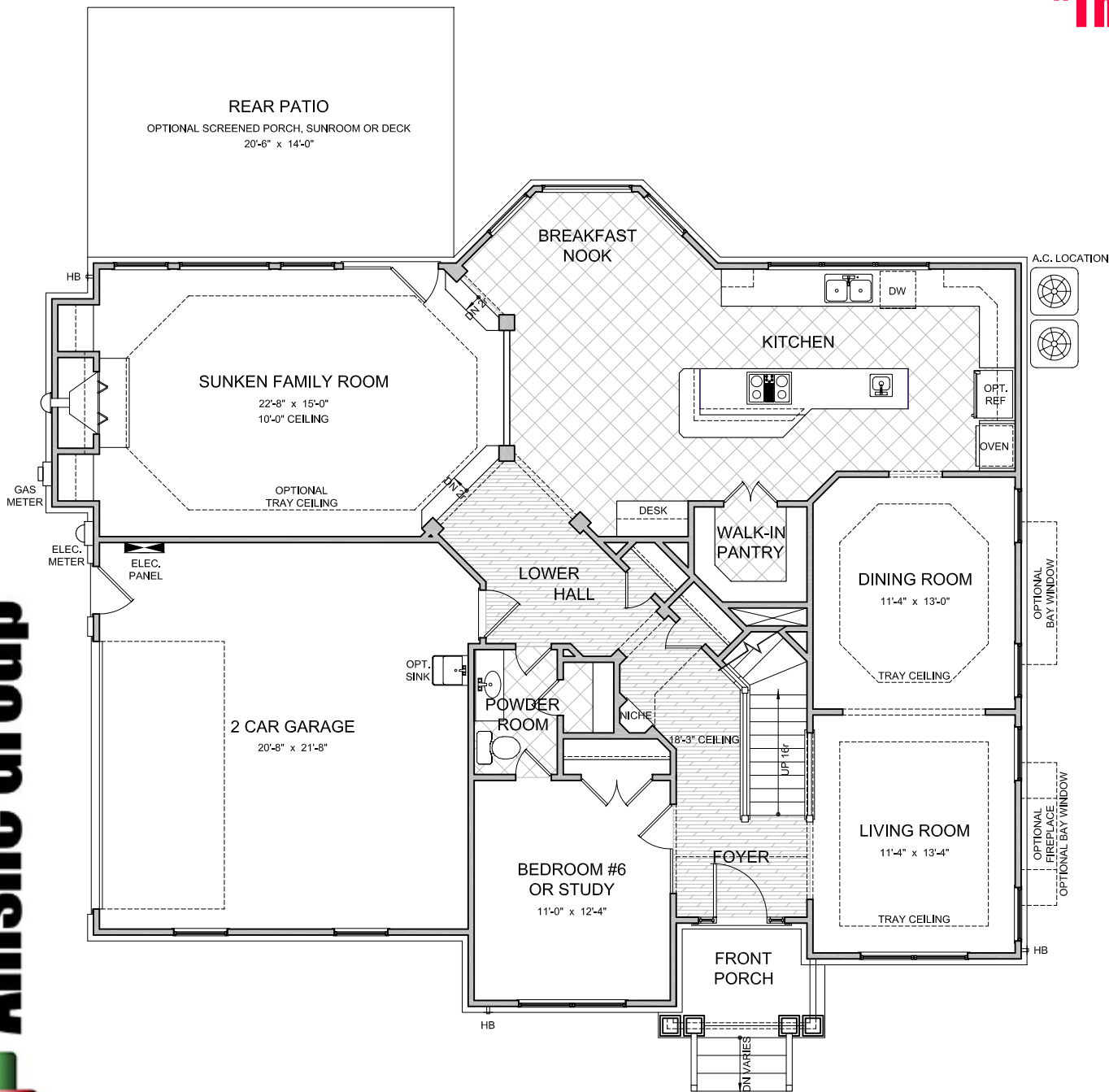
Ainslie Group



All information contained herein is based on the latest product information available at the time of printing. While Ainslie Group makes all reasonable efforts to provide accurate information, we also maintain the right to improve upon our designs at any time. As a result, there are no guarantees or warranties of prices, plans, specifications or materials represented in this brochure. Furthermore, we do not assume any liability for the accuracy or completeness of the illustrations and specifications presented. Illustrations are artists' interpretations only and are not meant to be an exact interpretation. This brochure shall not be relied upon as a substitute for current information available from your authorized AG representative.

"The Goodman" Model 7187

First Floor Plan Elevation 'A'



LAYOUT	
Bedrooms	5
With Optional	6
Bathrooms	2.5
With Optional	4

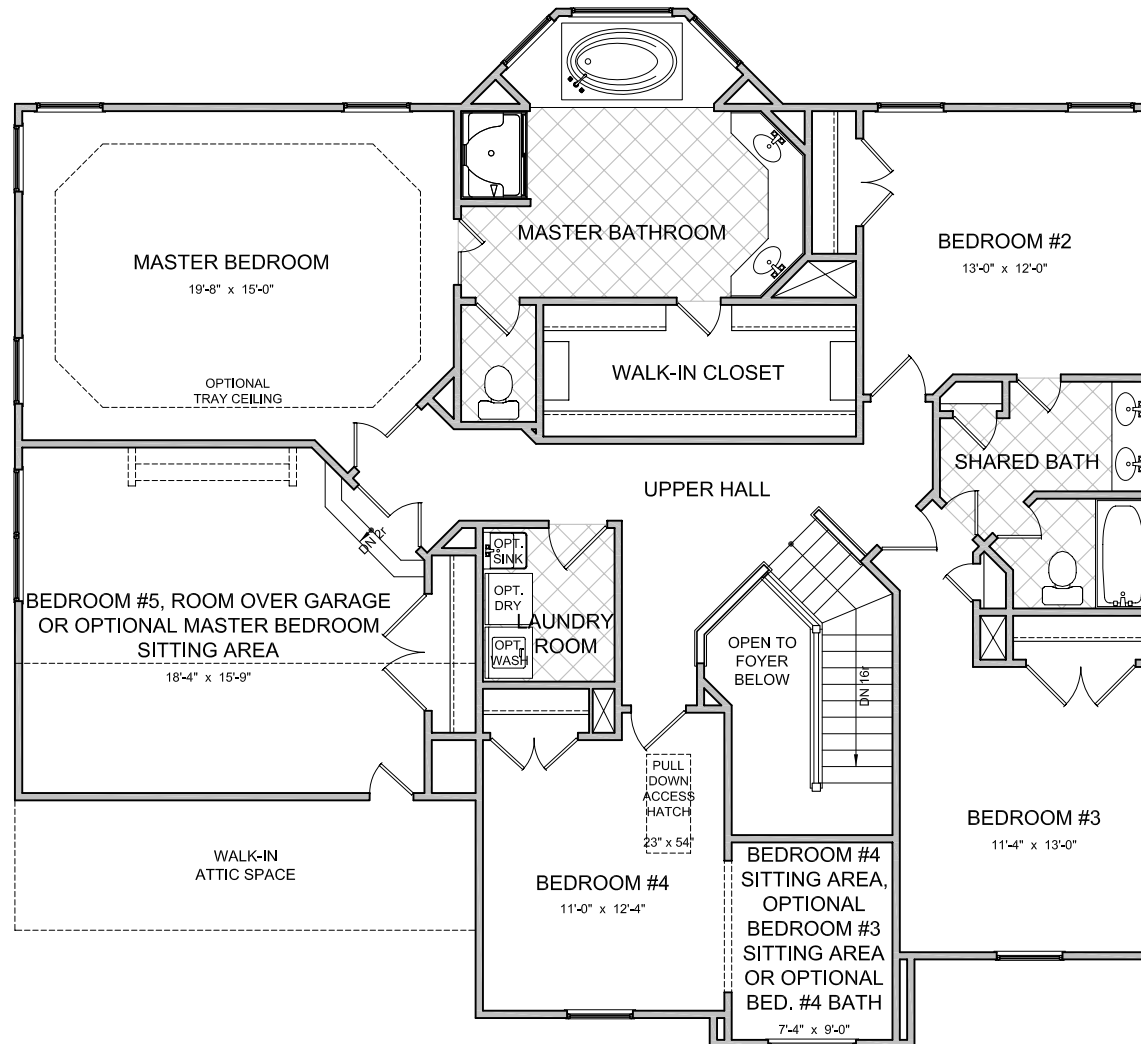
AREA	Sq.Ft.*
First Floor	1613
Second Floor	1622
Room Over Garage	313
Base Living Area	3548
2 Car Garage	463
Sunroom	188
Screened Porch	188
Elevation A Porch	53
Elevation B Porch	32
Elevation F Porch	187
Living Room Bay Window	15
Dining Room Bay Window	15

*SQUARE FOOTAGE FOR THIS HOUSE IS CALCULATED USING ANSI Z765-2003 STANDARDS. ACTUAL SQUARE FOOTAGE MAY VARY DUE TO FIELD CONDITIONS OR CUSTOMIZED FEATURES

NOT TO SCALE
REVISION DATE: 09/30/08

"The Goodman" Model 7187

Second Floor Plan Elevation 'A'




LAYOUT	
Bedrooms	5
With Optional	6
Bathrooms	2.5
With Optional	4

AREA	Sq.Ft.*
First Floor	1613
Second Floor	1622
Room Over Garage	313

Base Living Area 3548

2 Car Garage	463
Sunroom	188
Screened Porch	188
Elevation A Porch	53
Elevation B Porch	32
Elevation F Porch	187
Living Room Bay Window	15
Dining Room Bay Window	15

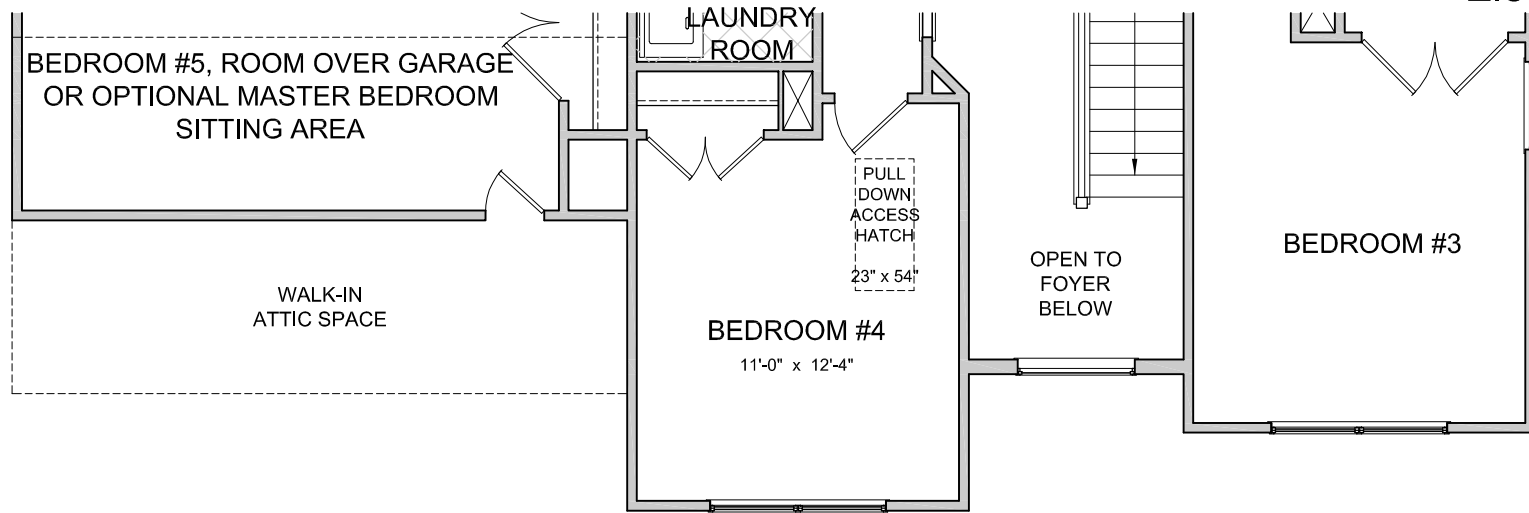
*SQUARE FOOTAGE FOR THIS HOUSE IS CALCULATED USING ANSI Z765-2003 STANDARDS. ACTUAL SQUARE FOOTAGE MAY VARY DUE TO FIELD CONDITIONS OR CUSTOMIZED FEATURES

NOT TO SCALE 

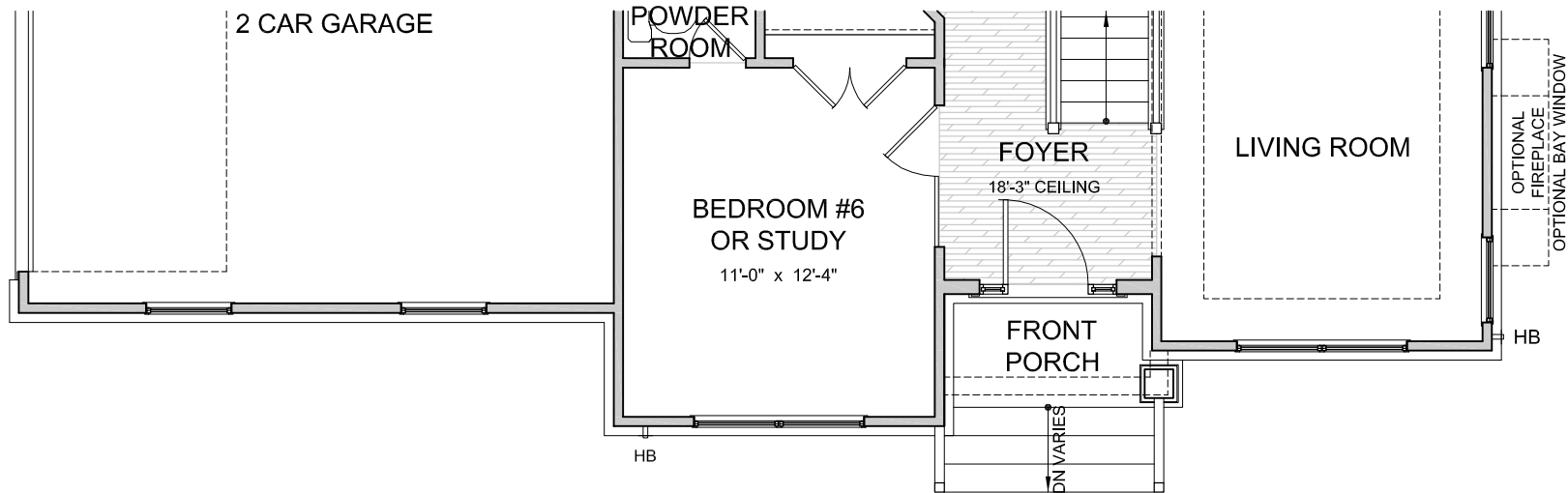
REVISION DATE: 09/17/08 jb

"The Goodman" Model 7187

Elevation 'B'



Second Floor Plan



First Floor Plan

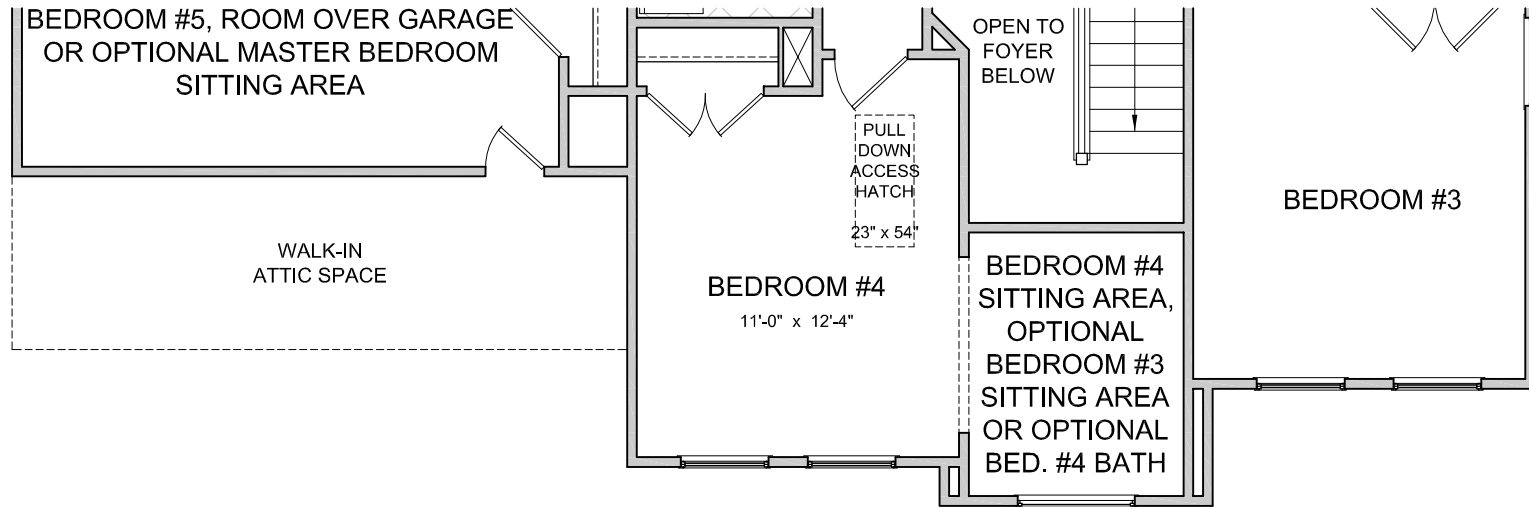
NOT TO SCALE

REVISION DATE: 09/30/08 jh

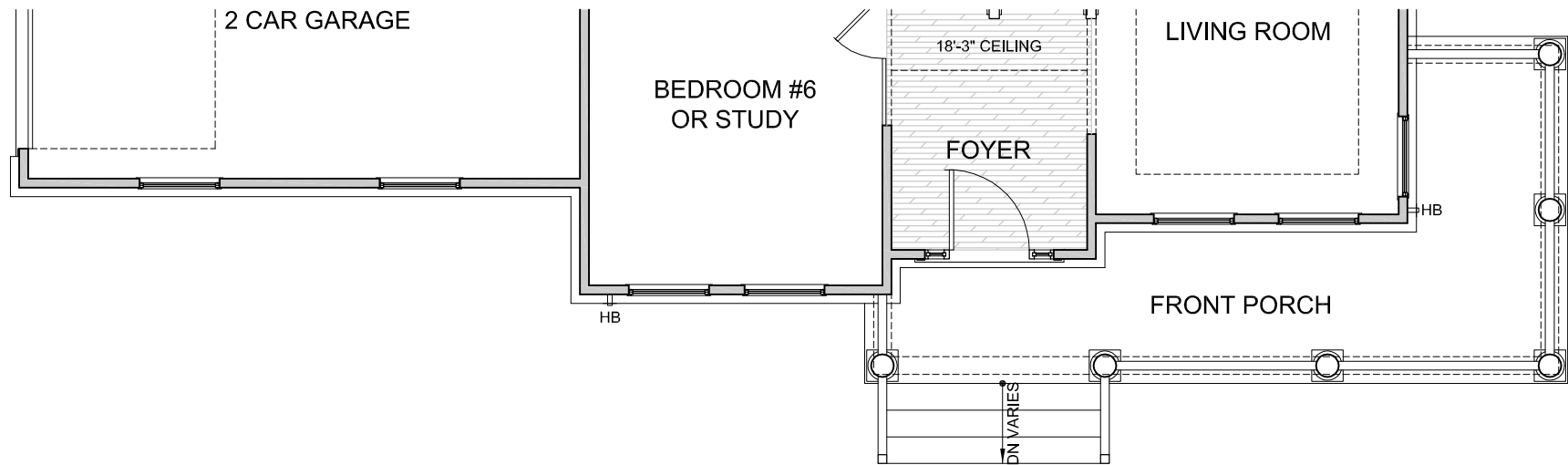


"The Goodman" Model 7187

Elevation 'F'



Second Floor Plan



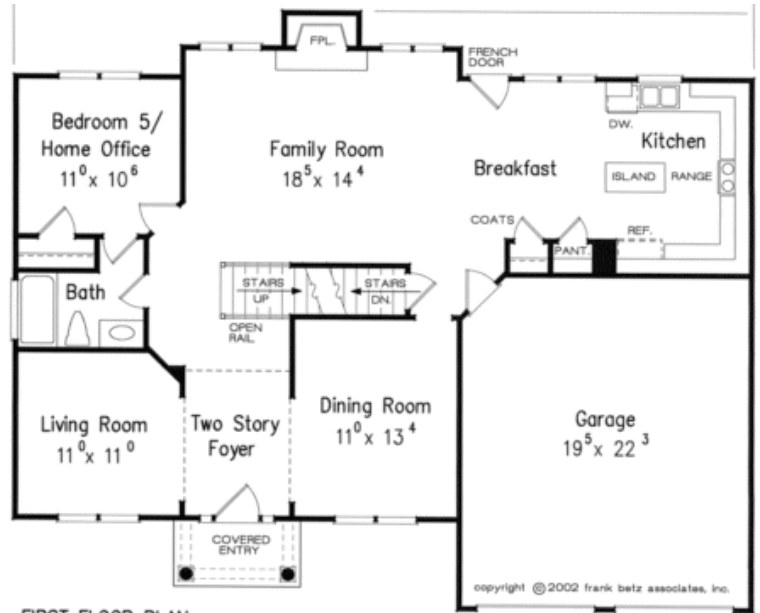
First Floor Plan

NOT TO SCALE

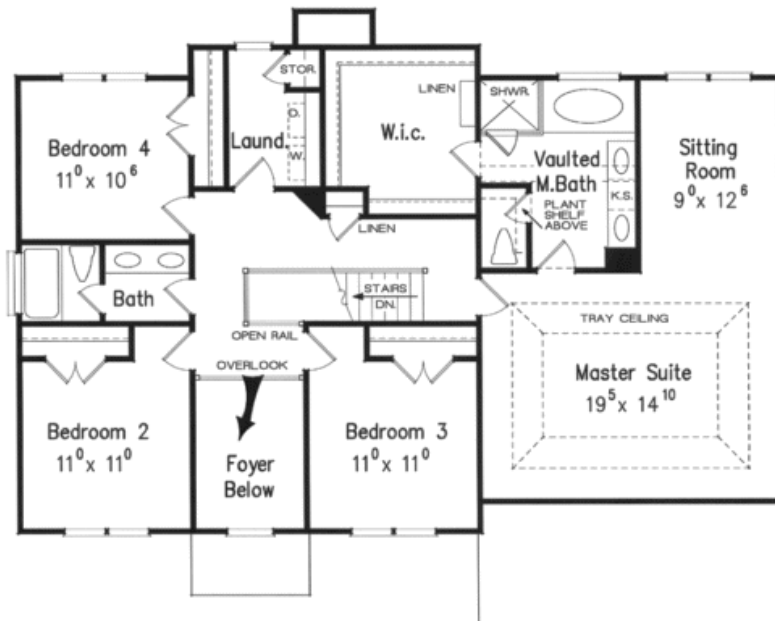
REVISION DATE: 09/30/08



"The Dewhurst" Model 6141



FIRST FLOOR PLAN



SECOND FLOOR PLAN

Square Footage

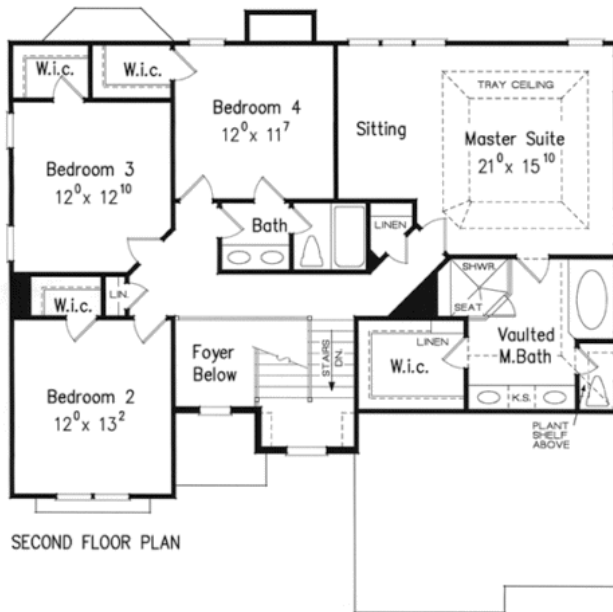
Total	2607
First Floor	1217
Second Floor	1390
Garage	441

Bedrooms	5
Baths	3.0

Dimensions

Width	50' - 0"
Depth	40' - 4"
Height	29' - 3"

"The Donnelly" Model 6143



Square Footage

Total	2513
First Floor	1240
Second Floor	1273
Garage	460

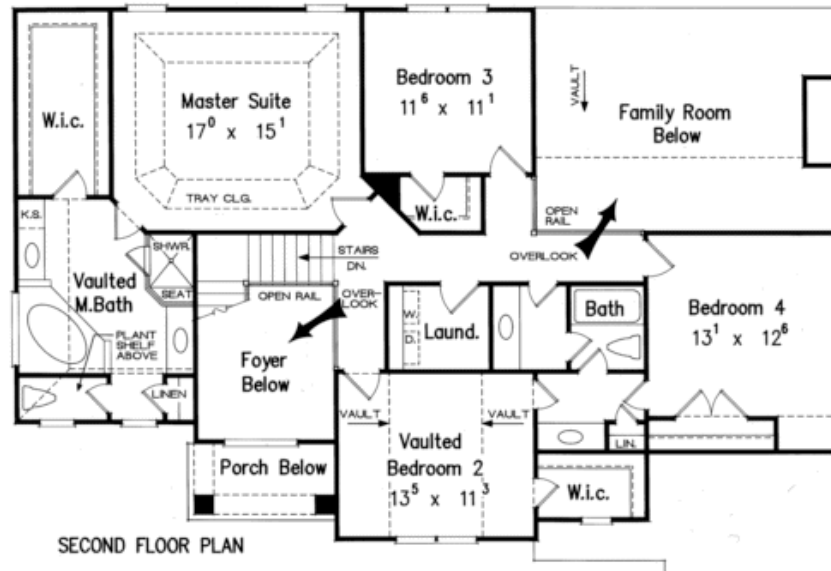
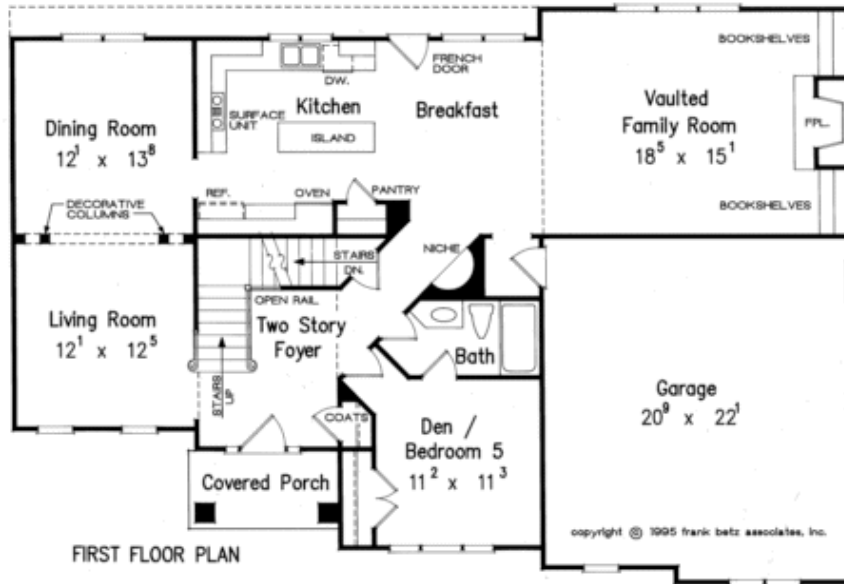
Bedrooms	5
Baths	3.0

Dimensions

Width	46' - 0"
Depth	45' - 6"
Height	30' - 9"



"The Whitehaven" Model 6145



Square Footage

Total	2793
First Floor	1413
Second Floor	1380
Garage	482

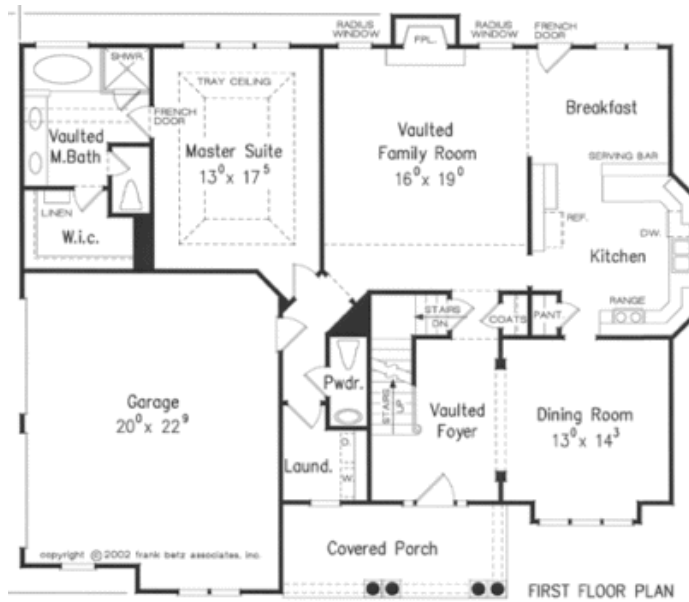
Bedrooms	5
Baths	3.0

Dimensions

Width	57' - 0"
Depth	39' - 0"
Height	34' - 8"



"The Lullwater" Model 6147



Square Footage

Total	2438
First Floor	1509
Second Floor	929
Garage	488

Bedrooms	4
Baths	3.5

Dimensions

Width	53' - 0"
Depth	45' - 4"
Height	26' - 0"

